

## FR 7.2

□ **Morozevich**

■ **Van Wely**

Wijk aan Zee 2002

**1.e4 e6 2.d4 d5 3.♘c3 dxe4**

An important question for white players is whether this swap will yield Black approximate equality. Some years ago, this variation suddenly gained considerable popularity among the better players, only to fall out of favour again equally rapidly.

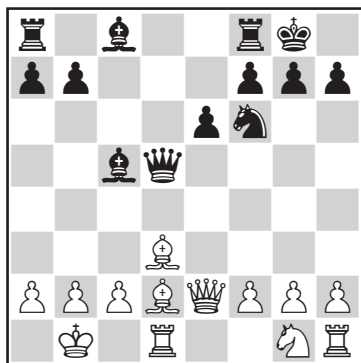
**4.♗xe4 ♗d7 5.♙d3**

Kasparov's recipe 5.♗f3 ♗gf6 6.♗xf6+ ♗xf6 7.c3, followed by 8.♗e5, causes Black some problems.

**5...♗gf6 6.♖e2 c5**

A well-known trap is 6...♗xe4 7.♙xe4 ♗f6? 8.♙xb7 ♙xb7 9.♖b5+, and White is a pawn up.

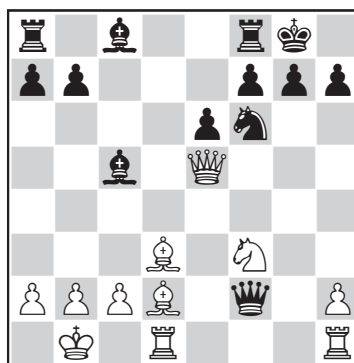
**7.♗xf6+ ♗xf6 8.dxc5 ♙xc5 9.♙d2 0-0 10.0-0 ♖d5 11.♙b1**



**11...♙xc5?!**

Black is not afraid. After the game, however, someone suggested the move 11...e5, after which there was a general consensus that this may well have been the last time that White has been able to win a game with this variation. And it's true that there are very few flashy moves available. After 12.♙e3 ♖c6 (less

clever is 12...♙xe3 13.♙xh7+, and the queen can be put back into the box) 13.♙xc5 ♖xc5 14.♗f3, for example, Black has a choice between the active 14...e4 15.♙xe4 ♖e8 16.♗d2 ♙f5 17.f3 ♖ac8 and the levelling 14...♙g4 15.h3 ♙xf3 16.♖xf3, with an equal position. **12.♗f3 ♖xf2 13.♖e5!**



White has sacrificed two pawns to launch a quick attack. Black will not find it easy to throw up a defence.

**13...♗d7**

It is quite remarkable that this double pawn sac has been the undoing of so many strong players. In the same tournament, for example, Bareev lost to Khalifman with 13...♙e7 14.♖df1 ♖c5 15.♖g3 ♗h5 16.♖h3 g6 17.♖hg1 ♗f4 (it is a pleasure to look at the various alternatives now: A) 17...♙h8 18.♙c3 e5 19.♗xe5 ♙f6 (19...f6 loses quickly after 20.♗xg6+! hxg6 21.♖h4) 20.♖xf6! ♗xf6 (after 20...♙xh3 White wins with 21.♗xg6+!) 21.♖f1! ♗g7 22.♖xf6+ ♙xf6 23.♗d7+ ♙e7 24.♗xc5, with a technically winning position, or B) 17...♙f6 18.♗g5 ♙g7 19.♗xh7! ♙xh7 20.♖g5 f5 21.♖fg1 ♖b6 22.♙c1 e5 23.♖xg6 ♖xg6 24.♖xg6 ♙xg6 25.♖g4+ ♙f7 26.♖xh5+, and White is winning) 18.♙xf4 e5 19.♖h6 exf4 20.♖g5, and another surprised black player had to resign.

13...♖xf3 cannot be recommended either. After 14.♖xc5 b6 15.♖g5 h6 16.♖h4 ♖h5

17. ♖g3 ♜h8 18. ♜hg1 ♜g8 19. ♜df1 ♟b7  
20. ♟c3 the black position is taken apart.

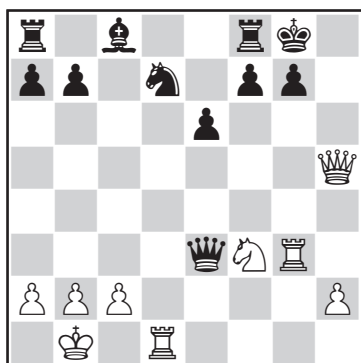
#### 14. ♟xh7+! ♜xh7

The clever 14... ♜h8 fails to 15. ♖h5! ♜f6  
16. ♖h3 ♜xh7 17. ♜hf1 e5 18. ♖h5 ♖e2  
19. ♜de1, and the threat of 20. ♜g5 settles  
Black's hash.

#### 15. ♖h5+ ♜g8 16. ♜hg1 ♟e3

Fleeing with 16... ♜e8 is impossible. White  
wins with 17. ♜xg7+ ♜xg7 18. ♟h6+ ♜h7  
19. ♟e3+ ♜g8 20. ♟xf2 ♟xf2 21. ♜g5.

#### 17. ♟xe3 ♖xe3 18. ♜g3



#### 18... ♖c5?

This is all too easy. After the strongest reply,  
18... ♖f4, accurate play is still required on  
White's part: 19. ♜dgl ♜d8 20. ♜g4! (taking  
control of square b4, which will later be  
needed for a check!) 20... ♖f6 21. ♜xg7+ ♜f8  
22. ♖g4 ♜e8 (no good is 22... ♜c5 23. ♜e5!  
♖xe5 24. ♖h4 ♜e8 25. ♜g8+ ♜d7 26. ♜xd8+,  
and White has a winning initiative; and  
22...b6? runs into the hammerblow 23. ♜g5!)  
23. ♖a4 b6 (the most stubborn defence is  
23...b5 24. ♜g8+ ♜f8 25. ♖xb5+ ♟d7  
26. ♜xf8+ ♜xf8 27. ♖b4+ ♖e7 28. ♜g8+  
♜xg8 29. ♖xe7 ♟c6 30. ♖g5+ ♜f8, but after  
31. ♜d4! White is superior) 24. ♜g8+ ♜e7  
25. ♜xd8 ♜xd8 26. ♖c6 ♜b8 27. ♖d6, and  
Black might as well resign.

#### 19. ♖h6

Black resigned.

## FR 7.5

□ Golubev

■ Epishin

Geneva 1993

#### 1. e4 e6 2. d4 d5 3. ♜c3 dxe4 4. ♜xe4 ♟d7

A sideline that pops up from time to time.  
Black puts his bishop on c6 and his knights on  
d7 and f6, and then continues his development  
and decides which plan he is going to follow.  
One plan is giving up the c6 bishop and then  
start pouring concrete with c7-c6. White is  
clearly better now, but he will not find it easy  
to demolish the black bastion. The other plan,  
which is slightly more ambitious, is ...b7-b6,  
followed by ...♟c6-b7 and ...c7-c5, with  
counterplay in the centre. But this is a  
time-consuming manoeuvre, and White is  
bound to use the time to reinforce his position.

#### 5. ♜f3 ♟c6 6. ♟d3 ♜d7 7. 0-0 ♜gf6 8. ♜eg5

The most aggressive option. After the other  
knight moves, 8. ♜g3 and 8. ♜ed2, White is  
also better.

#### 8... ♟d6

Golubev had a great time with this variation in  
this tournament: a few rounds earlier he had  
disposed of Sher after the following beautiful  
game: 8...h6 9. ♜xe6!? fxe6 10. ♟g6+ ♜e7  
11. c4 ♟xf3 12. ♖xf3 ♜b6 13. ♜e1 ♜xc4  
14. ♜xe6+ ♜xe6 15. ♖e2+ ♜e3 16. ♖xe3+  
♟d6 17. ♖g3+ ♜c6 18. ♖c3+ ♜b6 19. ♖b3+  
♜c6 20. ♟f4 b5 21. ♜c1+ ♜b6 22. a4 ♖d5  
23. ♟xc7+ ♜b7 24. ♟e4, and Black resigned.

#### 9. ♜e1 h6 10. ♜h3 b6

Lovers of this variation will often play  
10... ♟xf3 11. ♖xf3 c6 here, with the typical  
position of this line. After 12. ♜f4 White is  
better because he has the bishop pair and supe-  
rior central control.

#### 11. ♜e5 ♟b7 12. ♟b5! 0-0 13. ♟c6 ♜b8

Another possibility is 13... ♟xc6 14. ♜xc6  
♖e8 15. ♖f3 ♜d5 16. c4 ♜b4 17. ♜xb4 ♟xb4  
18. ♜e2, and White is marginally better.

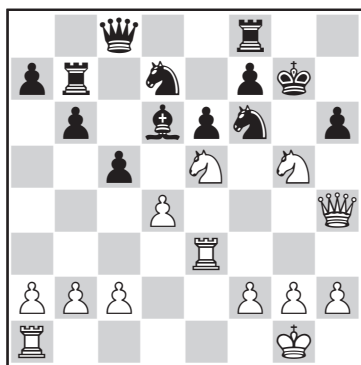
**14. ♖xb7 ♜xb7 15. ♖f3 ♖c8 16. ♖g3**

Logical. The black queen having briefly absconded from the defence, White decides to try for play against the black consort.

**16... ♖h7 17. ♖h4 c5 18. ♖xh6!**

White had better hurry, because the centre is being undermined.

**18... ♗g5+ ♖g7 20. ♜e3!**



**20... cxd4?**

A blunder. Black has two alternatives: the extremely complicated 20... ♜g8, after which

White has many different attacking possibilities:

- 21. ♗xf7 ♖xe5 22. ♗xe5 ♖f8 23. ♜f3 cxd4 24. ♗g4, with an equal position;  
 - After 21. ♜h3 h5 (21... ♖f8 is met by 22. ♖xh6+ ♖e8 23. ♗xd7 ♗xd7 24. ♜e1 ♗f8 25. ♗e4 ♖e7 26. d5, and White has a dangerous attack) 22. ♜g3 ♖f8 23. ♜e1 ♜g7! (23... cxd4? is not good in view of 24. ♗xd7+) 24. ♖f4 cxd4 25. ♗xd7+ ♜xd7 26. ♖xf6 ♖g8! 27. ♗xe6 ♜xg3 28. hxg3 fxe6 29. ♖xe6+ ♖g7 30. ♖f5, and this is most likely to result in a draw.

Black's second option is the relatively simple 20... ♗xe5 21. dxe5 ♖e7 22. ♜g3 ♗g4! 23. ♜xg4 hxg5 24. ♜xg5+ ♖xg5 25. ♖xg5+, with a draw by perpetual check. After 20... cxd4? everything will go like clockwork for White.

**21. ♜g3 ♖xe5 22. ♗xe6+ ♖h8 23. ♖xh6+ ♗h7 24. ♜h3 ♖xc2 25. ♗xf8 ♖g8**

Maybe the black player had overlooked the fact that after 25... ♗xf8 he is mated with 26. ♖xf8.

**26. ♗xh7 ♜c7 27. ♗f6+**

Black resigned.