

---

# Chess Tactics

## Volume 1

---

Sharpen your tactical ability daily on your way to mastery  
by  
Carsten Hansen



2019  
CarstenChess

# Set 1

## Exercises to Set 1

1.1)



\*\*\*

Black to move

Hint: The white king is isolated from its defenders

1.2)



\*\*\*\*

White to move

Hint: Black's king shelter is loose, and many pieces are unguarded

1.3)



\*\*\*

Black to move – what happens if he takes either of White's rooks?

Hint: Aim at Black's uncastled king

1.4)



\*\*

Black to move

Hint: Which spot in White's position is most exposed to Black's pieces?

## Solutions to Set 1

1.1)



**29...Rf3!** This is beautiful and elegant but, in fact, 29...Bxh3!! is more direct and stronger, for instance, 30.Qf1 (or 30.gxh3 Rf3 31.Qf1 Qh5 32.Qg2 Rxb3+ 33.Kg1 Rh4 and White will lose the queen) 30...Bg4 31.Rd2 (or 31.Nc4 Bxd1 (also 31...Rf3 32.Kg1 Qh5 wins) 32.Rxd1 Rad8) 31...Qh5+ 32.Kg1 Bd6 33.g3 Bf3 and White can only delay mate. **30.h4?** White immediately collapses. The best option was 30.d6 Bxh3! 31.Qf1 (not 31.gxh3 Rxb3#) 31...Bg5 32.Nc4 Be6 33.d7 Rd8 and Black is better. The other alternatives win easily for Black: 30.gxf3 Bxh3 31.Rg1 Qh5 32.Rg3 Bf1+ or 30.Qf1 Rxb3+ 31.gxh3 Qh5 32.Nc4 Bxh3 33.Qg1 Bg4+ 34.Qh2 Bxd1 and Black is up three pawns.

**30...Bg4!** and White resigned because the king will not escape without heavy material losses. **0-1**

**Gadimbayli (2420) – Sanal (2510)** Cesme 2018

1.2)



**21.Ne4!** White cannot allow Black to start consolidating his position, for instance, 21.Bf3 g5 or even 21...Bd5 are both satisfactory for Black and so is 21.Be2 Kb7 22.Nf3 Ng6 when White has good compensation for the queen but not more than that. **21...Kd8?!** Black cannot capture the bishop on g4: 21...fxg4 as 22.Nd6+ leaves White with a winning position. Black's best defense is 21...Rf8 although 22.Rad1 Bd5 23.Nc5 Qe8 24.Bd6 is absolutely horrendous for Black. **22.Nc5 Qc8 23.Be2 f4** Or 23...Ke8 24.Ba6! **24.Bxf4 h6 25.Bg4 Nf5 26.Nf3** Black is completely busted and White soon won. **26...Bd5 27.Nh4 Rf8 28.Rad1 Rf7 29.Nxf5 Rxf5 30.Ne6+ 1-0**

**Berzinsh (2410) - Sitnikov (2456)** Chelyabinsk 2018

1.3)



**20...Bxf1** If Black captures on a1 then **20...Qxa1 21.Re1+** (strictly speaking also **21.Bb2** wins, e.g., **21...Qxf1+ 22.Nxf1** when White threatens to play **Bxg7** and **22...0-0** is met by **23.Nf6+** and White wins) **21...Kd7** (or **21...Be5 22.Nc7+ Ke7 23.Ba3+**) **22.Nf5 Be5 23.Nc3+ Kc8 24.Ne7+ Kc7 25.Rxe5 Nd7 26.Re1** and Black will lose massive material to save his king. Black's best move is probably **20...0-0** when **21.Re1! Qxa1 22.Bb2 Qxe1+ 23.Qxe1 Nd7 24.Bxg7!** leaves White with a clear advantage. **21.Bb2 Qg5 22.Nf6+!** This is a devastating move that undoubtedly took Black entirely by surprise, otherwise, he would have avoided this line altogether. **22...gxf6 23.Qxd6 Nd7 24.Rxf1** and Black resigned as he will only prevent mate by accepting heavy material losses, e.g., **24...Qc5 25.Re1+ Kd8 26.Bxf6+ Kc8 27.Qxc5+ Nxc5 28.Bxh8** and White, of course, wins easily. **1-0**  
**Baumegger (2441) - Varga (2470) Dunajska Streda 2018**

1.4)



**17...g5!** This doesn't win but it leaves Black with a clear advantage. **18.hxg5?** White's best option is **18.Bxc6** when **18...Nxc6 19.hxg5 hxg5 20.Bxg5 Rxh3 21.gxh3 Rg8 22.Bf4 Nd4 23.Qd1** (**23.Nxd4 cxd4** is much worse for White because White cannot get his queenside pieces into play without losing material) **23...Nxf3 24.Qxf3 Bxe5 25.Bxe5 Qxe5 26.Nc3 Rg6** and Black's pieces dominate the board, while White's king is quite unsafe. **18...Ng6! 19.Bh2 hxg5 20.Nxg5 20.Rxh8** is even worse as after **20...Rxh8** Black threatens with **...g5-g4** and **21.Kg1** is met by **21...g4 22.Ne1 Nd4 23.Qxg4 Rxh2** and Black is winning. **20...Nd4 21.Qe3 Bxe5** and White resigned on account of **22.Bxe5 Nxe5 23.Nc3 Bxd3+ 24.Kg1 Rxh3 25.Nxh3 Rg8** and White is completely busted. **0-1**  
**Nestorovic (2372) - Atakisi (2380) Belgrade 2018**

# Set 11

## Exercises to Set 11

11.1)



\*\*\*

White to move

Hint: Find the right key to break Black's king shield

11.2)



\*\*\*

White to move

Hint: Push, then poke!

11.3)



\*\*\*\*

White to move

Hint: Face-off interrupted

11.4)



\*\*\*

Black to move

Hint: What's worth more central pawns or passed pawns?

## Solutions to Set 11

11.1)



**32.Bxd3! cxd3 33.c4! Ba4**

Or 33...Bxc4 34.Rc1 and White wins a piece.

**34.Rb6 Qd7 35.Rxf6!** Black loses a piece as 35.Rxf6 gxf6 36.Qxh6 is unacceptable for Black and therefore Black resigned. 1–0

**R.Djurhuus (2438) – L.E.Johannessen (2462)**

Norwegian ch (Sarpsborg) 2018

11.2)



**16.Bh7+!**

The first essential step, the black king gets pushed to a less ideal square. It can't be captured because the knight is pinned.

**16...Kf8**

On 16...Kh8 17.Nxd6 wins

**17.Bg6!**

Then the poke of the f7-pawn. The bishop is once more untouchable on account of knight fork, winning the queen.

**17...Be6 18.f5!?**

White also wins after 18.Nxd6 Qxd6 19.Bxf6 gxf6 20.Bxf7 Bxf7 21.Qh7, but there is still work to be done, e.g., 21...Bh5 22.Qxh6+ Ke7 23.Qxh5 fxe5 24.fxe5 Qe6 25.Rf6. The text move is simpler.

**18...Bd7**

Or 18...Bxe5 19.fxe6 Qxe6 20.Bf5 and White is winning.

**19.Nxd6 Qxd6 20.Nxf7 Qe7 21.Ne5** and White soon won...

**J.Hammer (2631) – B.Østenstad (2447)** Norwegian ch (Sarpsborg) 2018

11.3)



**20.Bc4+! Be6**

20...Kh8 is met by 21.Re3.

**21.Rd3!!**

Exchanging the rook on d6 makes Black's defenses collapse. On Twitter, when nobody was able to guess the right move, Indian top grandmaster Vidit Gujrathi stepped in and gave this move. After 21.Re3 Nd8, White is, of course, better, but Black is still fighting.

**21...Rxd3**

Or 21...Bxc4 22.Qxe7! Rxe7 23.Rxd6! and 21...Nd8 22.Rxd6 Qxd6 23.Ng5 both decisively win material for White.

**22.Qxd3 Qf7 23.Qe3**

23.Qe2 has the same effect.

**23...Bxc4 24.Qxe8+ Qxe8 25.Rxe8+**

White has a decisive advantage and soon won.

**K.Oliva (2491) – J.Alonso Moyano (2400) A80**

Barbera del Valles 2018

11.4)



**17...Nxe3! 18.Nxe3 Qxd4**

This looks obvious, but the question of what to do after...

**19.Qc1**

...protecting both the rook and the knight?

**19...b3!**

This is the answer! Black's pawns become irresistible.

**20.Nd1 a4! 21.Be2 a3! 22.Qc3 Rd8!**

Black is not afraid to exchange queens. The a- and b-pawns are too strong for White to handle.

**23.Qxd4 Rxd4 24.0–0 Bb7?**

Black should have been more patient, e.g., 24...Kf8 25.Bf3 Ra5 26.c6 Ke7 and White is basically with any decent moves. The text move allows White some opportunities to defend.

**25.Bf3 Bd5 26.Bxd5 exd5 27.c6 a2 28.Nb2??**

Here White should have tried 28.c7 Rc8 29.Nc3 Rxc7 30.Nxa2 when it will be far from easy for Black to win.

**28...Rd2! 29.Rf2 Rxf2 30.Kxf2 Rc8! 31.Ke3 Rxc6**

**32.Nd3 Rc3 33.Re1 Kf8** Next up is ...Rxd3 followed by ...b3–b2. 0–1

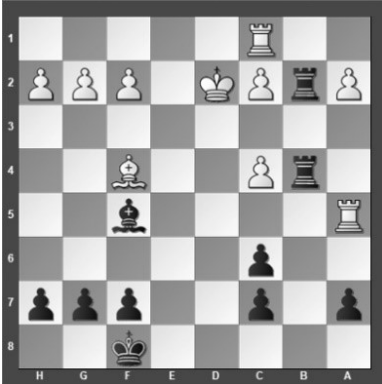
**A.Hnydiuk,A (2400) – T.Krauso (2442) Police**

2018

# Set 26

## Exercises to Set 26

26.1)



\*\*\*\*

Black to move and calculated 1...Rxc2  
2.Rxc2 Bxc2 3.Kxc2 Rxc4+ followed by  
Rxf4 - what did he miss?

26.2)



\*\*

White to move  
Hint: The right move order matters

26.3)



\*\*

White to move  
Hint: Distracting the defender

26.4)



\*\*\*\*

Black to move  
Hint: Uninterrupted troublemaker



## Solutions to Set 26

26.1)



21...Rxc2+! 22.Rxc2 Bxc2 23.Be3 Rxc4??

Tempting, but a giant blunder. Black had to play 23...Ra4! 24.Rxa4 Bxa4 25.Bxa7 Ke7 26.Bd4 g6 and White is at best, marginally better.

24.Rc5! Black loses a piece and therefore resigned.

1-0

D.Mastrovasilis (2586) – G.Stany (2494) Arad 2018

26.2)



23.Rxh7! Kxh7 24.g8Q+! The important second part of the combination. After the tempting 24.Rh1+, Black not only survives but is better after 24...Kg8 25.Rh8+ Kf7 26.g8Q+ Rxg8 27.Qxg8+ Ke7.

After 24.g8Q+, Black's king is stuck on the h-file which will cost him the queen: 24...Rxg8 25.Rh1+ Qh4 26.Rxh4+ Rxh4 27.Qxh4+ and White is winning.

1-0

Mil.Perunovic (2593) – N.Cabarkapa (2451) Montenegro Team ch (Niksic) 2018

26.3)



19.Ba6! Qxa6

The second point to the combination is that after 19...Qd7, White plays 20.Qf4! (not 20.Qb4 Qe7) 20...Qe7 and now 21.e5! traps Black's bishop on f6.

20.Qxc6+ Black resigned as he loses material on account of 20...Ke7 running into 21.Bc5+!. 1-0

G.Stany (2494) – Ra.Toma (2354) Arad 2018

26.4)



**23...Nb3!**

A cheeky but necessary move. The immediate 23...Qh3? runs into 24.Rg2 when 24...Qh1+ is answered by 25.Kf2 and 24...Nb3 with 25.Qa2 with nothing to worry about for White. Similarly 23...Ne4?? 24.fxe4 Qh3 25.Rg2 wins for White.

**24.Qb2**

The knight can't be captured because it leaves the queen unprotected: 24.Rxb3 Qh3 25.Rg2 Qh1+ 26.Kf2 Qxa1.

**24...Nxd2! 25.Rc1**

By the same token as above, 25.Qxd2 loses to 25...Qh3 26.Rg2 Qh1+.

**25...Nxc4!**

Black is not worried about the pin because he always can pull ...Qh3 out of the hat.

**26.Qc3 Qh3!?**

This works but 26...Qc5! is even better. After 27.Qxc4 Rh1+ 28.Kxh1 Qxf2 Black will play ...Rh8 next time and end the fun.

**27.Rg2 Rac8** and White had enough. **0-1**

**O.Gschnitzer (2389) – A.Kovchan (2566)** Dresden 2018