

Tadej Sakelšek  
Adrian Mikhalchishin

# **THE POWER OF TACTICS**

**Volume 2**

**Become  
a tactical wizard**



Chess  
Evolution

Responsible editor  
Csaba Balogh

Cover designer  
Piotr Pielach  
Drawing by Ingram Image

Typesetting  
i-Press <[www.i-press.pl](http://www.i-press.pl)>

First edition 2019 by Chess Evolution

*The Power of Tactics. Volume 2: Become a tactical wizard*  
Copyright © 2019 Chess Evolution

All rights reserved. No part of this publication may be reproduced, stored in a retrieval system or transmitted in any form or by any means, electronic, electrostatic, magnetic tape, photocopying, recording or otherwise, without prior permission of the publisher.

ISBN: 978-615-5793-20-2

All sales or enquiries should be directed to Chess Evolution  
2040 Budaors, Nyar utca 16, Hungary

e-mail: [info@chess-evolution.com](mailto:info@chess-evolution.com)  
website: [www.chess-evolution.com](http://www.chess-evolution.com)

Printed in Hungary

# TABLE OF CONTENTS

KEY TO SYMBOLS	5
PREFACE	7
INTRODUCTION	9
BECOME A TACTICAL WIZARD	11
TACTICS ACCORDING TO SMYSLOV	13
CHECK	13
PIN	14
DOUBLE ATTACK	14
UNPROTECTED PIECE	15
ATTACK ON THE KING	17
TYPICAL MATING MOTIFS AND ATTACKS	17
MATING CONSTRUCTION	24
DEFENSIVE TACTICS	27
TACTICAL COMBINATIONS TO ACHIEVE PERPETUAL CHECK	27
STALEMATE COMBINATIONS	28
SACRIFICES USED TO ACHIEVE THEORETICALLY DRAWN POSITIONS OR FORTRESSES	30
THE QUEEN SACRIFICE	33
SACRIFICING THE QUEEN TO ACHIEVE A MATING CONSTRUCTION	33
QUEEN SACRIFICE TO GAIN MATERIAL	37
SACRIFICING THE QUEEN FOR A DRAW	38
WARM UP – EXERCISES	39
WARM UP – SOLUTIONS	51
TACTICS ACCORDING TO SMYSLOV 3	59

TACTICS ACCORDING TO SMYSLOV 3 – SOLUTIONS	77
MATING CONSTRUCTION 3	87
MATING CONSTRUCTION 3 – SOLUTIONS	99
TYPICAL MATING MOTIFS AND ATTACKS 3	107
TYPICAL MATING MOTIFS AND ATTACKS 3 – SOLUTIONS	117
DEFENSIVE TACTICS 3	123
DEFENSIVE TACTICS 3 – SOLUTIONS	135
QUEEN SACRIFICE 3	143
QUEEN SACRIFICE 3 – SOLUTIONS	149
EXERCISES 3	153
EXERCISES 3 – SOLUTIONS	181
TACTICS ACCORDING TO SMYSLOV 4	199
TACTICS ACCORDING TO SMYSLOV 4 – SOLUTIONS	207
MATING CONSTRUCTION 4	213
MATING CONSTRUCTION 4 – SOLUTIONS	221
TYPICAL MATING MOTIFS AND ATTACKS 4	227
TYPICAL MATING MOTIFS AND ATTACKS 4 – SOLUTIONS	235
DEFENSIVE TACTICS 4	241
DEFENSIVE TACTICS 4 – SOLUTIONS	251
QUEEN SACRIFICE 4	259
QUEEN SACRIFICE 4 – SOLUTIONS	263
EXERCISES 4	267
EXERCISES 4 – SOLUTIONS	287

# KEY TO SYMBOLS

=	Equality or equal chances
±	White has a slight advantage
∓	Black has a slight advantage
±	White is better
∓	Black is better
+-	White has a decisive advantage
-+	Black has a decisive advantage
∞	unclear
∞	with compensation
↔	with counterplay
↑	with initiative
→	with an attack
Δ	with the idea
□	only move
N	novelty
!	a good move
!!	an excellent move
?	a weak move
??	a blunder
!?	an interesting move
?!	a dubious move
+	check
#	mate



# PREFACE

The middlegame is the most important part of the game, as the majority of encounters are decided there. We know that sometimes it is difficult to divide strategy and tactic, as they both have the same aim — to win the game. Strategy is the more difficult subject, because it involves planning and structures: tactics helps to conduct these plans in the fastest way.

In olden times it was the division of the style of players — TACTICAL and STRATEGIC. In modern chess this division practically does not exist, as every top player is able to operate with all tools. Still we can name as tactical-style players such great attackers as Mikhail Tal, Rashid Nezhmetdinov, Albin Planinc and Victor Kupreichik. Perhaps, in reality, their strategy was a bit simpler with the aim of direct attack on the opponent's king, and not simply attacking some weakness on the queenside, for example.

During the times of the Soviet chess school, the label TACTICIAN led to an underestimation of attackers. But we all know that the chess public enjoy attacking play and admire great attackers much more than pure, boring strategists. Of course, this attitude is connected with the openings.

For example, in gambits, players have to consider many more tactical elements than in, for example, the Carlsbad variation of the Queen's Gambit. Likewise, the Sicilian Defence with kings castled on opposite sides and fierce pawn attacks on both flanks; here tactics and sacrifices are in the air as the strategy was prepared from the first moves of the openings.

There are many valuable books on tactics, and many authors have presented classifications of tactical motifs and themes. But some of them are too academic — in modern times we require a much more practical education. For this reason, nowadays different test books have become very popular.

Become a Tactical Wizard is the second book in the series The Power of Tactics. In this second volume, the authors continue to develop their ideas from the first book — Tactics According to Smyslov — where they explain that in chess there are four main tactical elements (check, pin, double attack and unprotected pieces).

They have added very instructive exercises revolving around mating attacks and queen sacrifices to achieve different goals and, in my opinion an extremely important element, defensive tactics.

IGM Aleksandr Beliavsky.



# INTRODUCTION

Tactics, including the calculation of variations, is the most important part of chess. Knowledge of openings, middlegames, endgames, strategy, technique, realization of the advantage and similar is also extremely important. But all this knowledge doesn't help us if we don't calculate properly.

There are many great books on tactics, wherein the authors have assembled different tactical motifs and elements. This area of chess is more or less very well covered in literature. This begs the question, why then have we decided to write and publish our book?

Firstly, during all these years that we have been working as chess coaches, we have collected a huge amount of instructive material, and it made sense to us to share it with our readers as well.

Secondly, you can never have enough tactics. Every chess player must solve as many puzzles as possible in order to grow stronger.

Lastly, we have been friends for many years and work well together, and we simply decided to show this through our books.

Our plan was rather ambitious — to publish a series of three books. The books are designed for different levels.

The second book in the series is divided into three parts:

1. A theoretical part where you will get to know the basics about tactical elements according to Smyslov (check, pin, double attack, unprotected piece). Mating attacks (typical motifs and mating construction), queen sacrifice and defensive tactics.
2. Exercises and solutions for level 3.
3. Exercises and solutions for level 4.

We prepared clear and, we hope, nice examples, plus a lot of exercises for levels up to 2100. Study, enjoy and use tactics as much as possible in your games! Combinations really are brilliant moments in a chess game.

## RECOMMENDATIONS ABOUT SOLVING THE PUZZLES

At first try to solve every puzzle from the diagram itself. If it proves too difficult, then put the position on the board and try to solve it without moving the pieces. Exercises are divided into two levels, easier and then more complicated.

Adrian Mikhalchishin  
Tadej Sakelšek

# BECOME A TACTICAL WIZARD

In the first book we tried to demonstrate a slightly different approach to studying tactics, and we chose tactical elements according to a great champion — Vasily Smyslov — to do so. The second book is devoted to much more complicated tactical ideas and motifs. We will also continue to develop the ideas from the first book.

Every great player used tactics to achieve different aims. Some of them used simple tactical ideas for positional reasons, especially to ac-

celerate their own plans or to stop the opponent's plan. Great players like Botvinnik, Smyslov, Petrosian, Fischer and Karpov used a lot of tactics after establishing fundamental positional preparation first — we usually call these tactical ideas Capablanca's small tactical gems. Some other great champions, such as Morphy, Alekhine, Tal and Kasparov, used more powerful tactical ideas to attack the opponent's king. In this book we will try to concentrate more on these beautiful and powerful tactical methods.



# TACTICS ACCORDING TO SMYSLOV

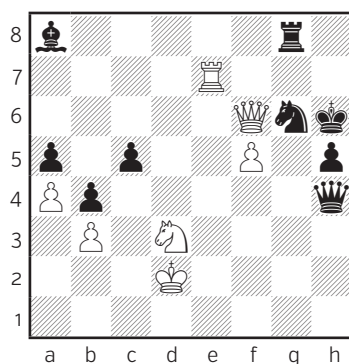
As we have already mentioned in the first book, the great World Champion Vasily Smyslov came up with his own fantastic and very simple system to prioritise tactical elements. He considered check, pin, double attack and unprotected piece as the main tactical elements. All other elements are, according to him, of lesser importance. In games we mostly come across a combination of the afore-mentioned elements.

Let us see an example of each of the elements:

## CHECK

### Example 1

- ▷ Miklos Nemeth
- ▷ Mateusz Bartel



42. ♖e6??

This was played in the game and Black won without any great problems. Instead he could have used one of the most common tactical elements — CHECK.

42. ♖h7+! ♔xh7 43. fxg6+

Again check, which at the same time creates an unprotected piece on h4. Now White is winning.

43... ♖xg6 44. ♔xh4+-

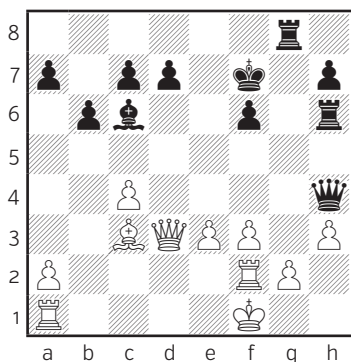
42...♔xf6 43.♖xf6 ♔g5 44.♖xg6+  
♖xg6 45.fxg6 ♔xg6-+ 0-1

28.♔g1 (28.♖b1 ♖g6-+ and the final  
piece joins the attack. Black is win-  
ning.) 28...♔h1+-+

## PIN

### Example 2

- ▷ Svetozar Gligoric  
▷ Bent Larsen



25...♖xg2!

With this rook sacrifice Black cre-  
ates a very annoying pin.

26.♖xg2 ♔xh3 27.e4

27.♔f2 ♔xf3+-+;

27.♔d2 ♔xf3

Black is bringing extra pieces to the  
attack.

27...♖g6-+

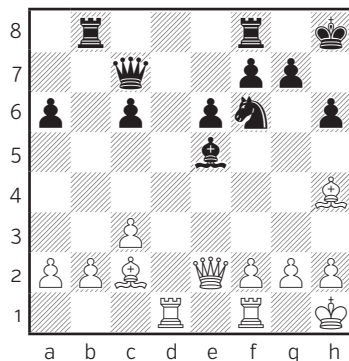
27...♖g6 White resigned in view of  
28.♔d2 ♔h1+-+

0-1

## DOUBLE ATTACK

### Example 3

- ▷ Mikhail Nikitenko  
▷ Magnus Teitsson



The position is slightly better for  
White due to the superior pawn  
structure and the bishop pair. But  
White can create a nice double at-  
tack at the end of the variation.

21.f4! ♕xf4

21... ♗d6 22. ♕xf6 gxf6 23. ♖d3+-

22. ♕xf6! gxf6 23. ♖e4+-

White is threatening to mate the opponent's king or otherwise capture the bishop on f4.

23...f5 24. ♖xf4 1-0

37. ♖xd5?

and after

37... ♘xd5=

the position became equal and the game eventually ended in a draw.

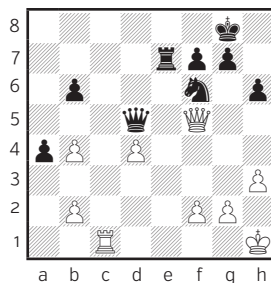
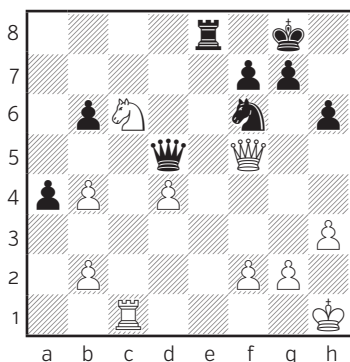
Instead 37. ♘e7+! would have won the game.

On 37... ♖xe7 Black will have to give up his queen due to the weakness of the back rank.

## UNPROTECTED PIECE

### Example 4

- ▷ Anatoly Karpov
- ▷ Lubomir Kavalek



38. ♖c8+! ♖e8 39. ♖xe8+ ♘xe8  
40. ♖xd5+-

1/2

The former World Champion had an option here to create an unprotected piece and win the game in fine style. Instead he played





# ATTACK ON THE KING

In chess we generally follow two strategies — the first one is connected with the idea of winning material. The second one is directed against the opponent's king. For both strategies we use different tactics. For the second strategy we tend, in many cases, to use different sacrifices to achieve an advantage in our development and to accelerate it. We also use the sacrifices to create weaknesses in the opponent's position around the king.

## TYPICAL MATING MOTIFS AND ATTACKS

Before starting any direct mating attack on the king it is necessary to involve as many of our forces as possible. Our pieces should be active and mobile, able to come closer to the opponent's king as quickly as possible.

The first step in this process is fast development of our pieces, together with sufficient control in the center. The second step involves the mobility of attacking pieces which

will be necessary for a successful attack. The rule is simple — we should bring to the attack as many pieces as possible, preferably more than the defending side.

The preparation process applies to both sides — for the attacking and the defending sides alike. The player who is able to prepare his plan faster is usually more successful. In most cases the opponent's king has huge problems facing the attacking pieces if his own pieces don't match the attacking ones. Some trainers recommend counting the pieces participating in attack and defense. After that we should make a preliminary evaluation of the attack and defense based on which side has pure mathematical advantage in quantity. Of course, we should not use this rule automatically, but rather use it as a practical recommendation to bring to the critical place more forces if possible. Sometimes the quantity of the pieces is not as important as their coordination.

An attack must be directed into certain weakened points in the opponent's camp. For this reason, it is necessary to first weaken the po-

sition of the king. Usually players achieve this goal by charging forward with pawns, as for example in the Sicilian Defense or King's Indian Defense. It is a very natural and, in most cases, the 'cheapest' way to start the attack, as major material sacrifices are not necessary at this time.

Another way is more complicated and involves mostly pieces to weaken the opponent's king defenses. In many cases to achieve this goal it is necessary to sacrifice some of our pieces. We know a few typical or classical sacrifices to open the opponent's king position, as for example the Lasker sacrifice of two bishops, sacrifices of the bishop on h7 (h2) and h6 (h3) squares, sacrifices of different pieces on g7 (g2) and f7 (f2) squares. In positions with opposite-side castling, similar sacrifices can be used on the a2 (a7), b2 (b7), c2 (c7) and a3 (a6) squares. We can also use sacrifices to open the files in front of the king in order to clear the way for the heavy pieces to join the attack. At the end of the day, in such cases heavy pieces frequently decide the game.

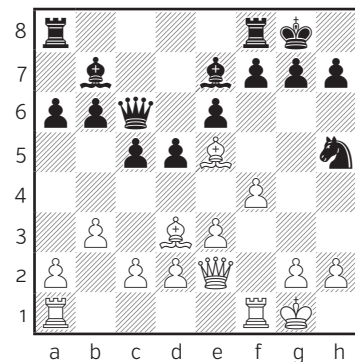
We can also use sacrifices to prevent the opponent from castling, stranding our opponent's king in the center. These kinds of sacrifices were typical for representatives of 'middle

ages' chess, such as Leonardo Giovanni da Cutri or Ruy Lopez. Players of these generations invented attacking play from the very start. They used sacrifices in the opening to accelerate their development and to keep the opponent's king in the center. Nowadays we call these kinds of openings gambits.

## LASKER SACRIFICE

### Example 5

▷ Emanuel Lasker  
▶ Johann Hermann Bauer



Emanuel Lasker, the 2nd World Champion, is remembered also by the sacrifice that carries his name — the Lasker sacrifice of the two bishops.

15. ♖xh7+!

White sacrifices the first bishop to open the opponent's king.

15. ♖xh5 f5=

15... ♔xh7 16. ♖xh5+ ♔g8 17. ♕xg7!

And another sacrifice. The idea behind this one is to open the second line in front of the king, leaving the monarch without protection.

17... ♔xg7

17... f6 18. ♕h6! (18. ♖g6?! ♖e8 19. ♖h6 ♔f7,) 18... ♖e8 19. ♖g4+ ♔h7 20. ♖g7#; 17... f5 18. ♕e5 ♖f6 19. ♖f3 ♕f8 20. ♖g3+ ♕g7 21. ♕xf6+-

18. ♖g4+!

An important check. Remember — you will be able to checkmate the opponent much easier on the edge of the board.

18. ♖f3? ♖h8 19. ♖g3+ ♕g5 20. ♖xg5+ (20. ♖xg5+ ♔f6+-) 20... ♔f8 21. ♖f6 ♖g8

18... ♔h7 19. ♖f3

Now the second piece joins the attack and the game is basically over.

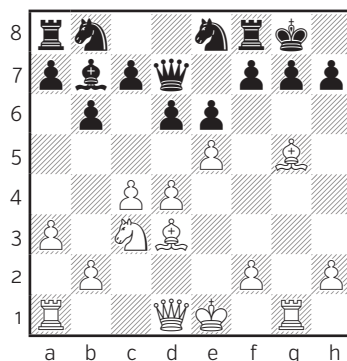
19... e5 20. ♖h3+ ♖h6 21. ♖xh6+ ♔xh6 22. ♖d7!+- 1-0

## SACRIFICES ON h7 {h2}

### Example 6

▷ G. Aczel

▷ I. Kincs



White's pieces are much better placed than Black's. It is time for action!

13. ♕xh7+-

A typical sacrifice of the bishop on h7, with the idea being to open the position around Black's king.

13. ♕xh7+

Black resigned in view of 13... ♔xh7 14. ♖h5+ ♔g8 15. ♕f6!+- and Black will simply get mated in the next few moves.

1-0