

Compiled by **Boris Postovsky**

Devoted to Chess

The Creative Heritage of Yuri Razuvaev

New In Chess 2019

Contents

Preface – From the compiler.	7
Foreword – Memories of a chess academic	9
‘Memories’ authors in alphabetical order	16
Chapter 1 – Memories of Razuvaev’s contemporaries – I	17
Garry Kasparov	17
Anatoly Karpov	19
Boris Spassky	20
Veselin Topalov	22
Viswanathan Anand	23
Magnus Carlsen	23
Boris Postovsky	23
Chapter 2 – Selected games	43
1962-1973 – the early years	43
1975-1978 – grandmaster	73
1979-1982 – international successes	102
1983-1986 – expert in many areas	138
1987-1995 – always easy and clean	168
Chapter 3 – Memories of Razuvaev’s contemporaries – II	191
Evgeny Tomashevsky	191
Boris Gulko	199
Boris Gelfand	201
Lyudmila Belavenets	202
Vladimir Tukmakov	202
Irina Levitina	204
Grigory Kaidanov	206
Michal Krasenkow	207
Evgeny Bareev	208
Joel Lautier	209
Michele Godena	213
Alexandra Kosteniuk	215

Chapter 4 – Articles and interviews (by and with Yuri Razuvaev).	217
Confessions of a grandmaster	217
My Gambit	218
The Four Knights Opening	234
The gambit syndrome	252
A game of ghosts	258
You are right, Monsieur De la Bourdonnais!!	267
In the best traditions of the Soviet school of chess	276
A lesson with Yuri Razuvaev	283
A sharp turn	293
Extreme	299
The Botvinnik System	311
‘How to develop your intellect’	315
‘I am with Tal, we all developed from Botvinnik...’	325
Chapter 5 – Memories of Razuvaev’s contemporaries – III	331
Igor Zaitsev	331
Alexander Nikitin	332
Albert Kapengut	332
Alexander Shashin	335
Boris Zlotnik	337
Lev Khariton	337
Sergey Yanovsky	339
Ilya Odessky	340
Sergey Shipov	350
Adrian Mikhalchishin	350
Index of openings	355
Index of names	356
Index of annotators to games	362
Bibliography	363
Acknowledgments	365

PREFACE

From the compiler

Dear reader!

Before you is a book about a remarkable chess player and great trainer – Yuri Sergeyevich Razuvaev (1945-2012).

His contribution to the riches of world chess culture is enormous. He is the author of some wonderful chess books and many analytical investigations in the theory of the game, which remain topical to this day. For nine years, Razuvaev was a representative of the newly-formed FIDE Trainers' Commission. His pupils, located all around the world, enjoy success as both players and trainers and many of his games are textbook examples.

Yuri Sergeyevich enjoys great respect in the chess world. This is why so many World Champions and their challengers took part in the creation of this book, together with top grandmasters and well-known trainers – all those to whom he gave the benefits of his intellect and his soul. You will rarely meet such a collection of famous names in one book!

This collection consists of three parts: reminiscences of his contemporaries, selected games and articles concerning the theory of chess, and children's education. Developing effective methods of teaching chess in schools and developing in children the ability to think at the board was a subject to which Razuvaev devoted a great deal of effort and energy in the last years of his life. This book can be used as a textbook for players who are striving to improve their play and their understanding of chess.

The main task of the book is to preserve all that is most valuable in Razuvaev's heritage, and to offer the reader a book which will be highly useful in improving your chess.

Boris Postovsky

Honoured Trainer of Russia

FOREWORD

Memories of a chess academic

By Vladimir Kramnik

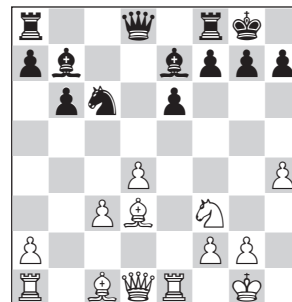
In my opinion, the multi-faceted creativity of Yuri Razuvaev consisted of three main directions – tournament practice, research work on chess theory and training activity. From the start of the 1960s, and for a good 40 years, he took part in numerous individual and team competitions, both domestic and international, including Soviet Championships, the greatest chess events in the world.



Yuri Razuvaev.

His contribution to the theory of chess is very wide-ranging. To every stage of the game – opening, middlegame and endgame – Razuvaev brought new, interesting ideas and these generally accorded with the requirements of this or that concrete position, taking into account its dynamic potential. In the course of his career, Yuri Sergeyevich came up with numerous interesting novelties, which immediately attracted followers. Readers will doubtless appreciate his many ideas in the Queen's Gambit and, in particular, his famous discovery **13.h2-h4!**.

Razuvaev-Farago

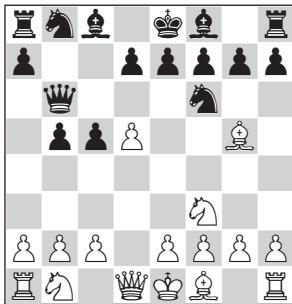


Details can be found in Tomashevsky's commentary to

Game No 21 (Chapter 1) and in the article 'My Gambit' (Chapter 4).

Razuvaev's theoretical innovations also concerned the study of strategic ideas and combinational motifs, with which virtually no chess game can dispense. Long before the advent of the computer era, he explored famous games of great chess players and found in them unexplored opportunities. Yuri Sergeyeovich was able to masterfully work with literature, extracting promising raw material from the primary sources, and then developing the finished product from it.

Razuvaev-Vaganian

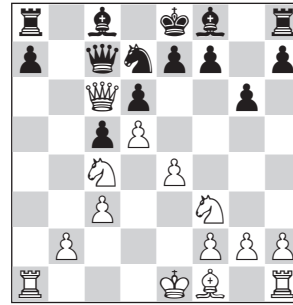


This position arose in a game Grynfeld-Keres, Szczawno Zdroj 1950, which continued 5. ♕xf6. Black won convincingly, and for a long time afterwards this was considered a harmless continuation. Razuvaev studied all the subtleties of this continuation and in 1982, he played this very move:

5. ♕xf6!

There followed:

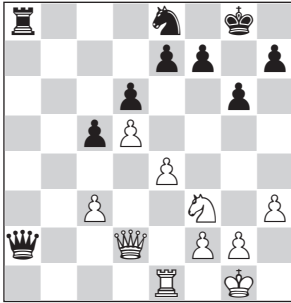
**5... ♖xf6 6.c3 g6 7.e4 ♗b6 8. ♘bd2
d6 9.a4! bxa4 10. ♘c4 ♖c7
11. ♗xa4+ ♘d7 12. ♗c6!**



And it was clear that Black would not get out of the opening alive. This game is annotated brilliantly by A.Kuzmin as Game 29 (Chapter 2).

And how deeply and beautifully Razuvaev annotated his own games! The attentive reader will find in them detailed analysis of concrete opening schemes and also deep ideas arising from the specific features of the battle in the middlegame (Chapter 2).

The endgame was also not ignored in his work. All too often, in the heat of battle, players get carried away by the tactical fight and forget that the best way to exploit an advantage is often to go into the endgame. Numerous technical endings are analysed in the work of Fine, Averbakh, Dvoretsky and other specialists. Razuvaev, together with Nesis, worked on the more conceptual issues of when and how to enter the endgame.

Taimanov-Bronstein

This apparently simple and equal position arose in a game from the Candidates tournament at Zurich 1953. It is White's move and he played

23.e5,

not avoiding the exchange of queens, but after

23... ♔xd2 24. ♘xd2 dxe5 25. ♖xe5 ♕f8

it turned out that the ending is in Black's favour. In his article 'A sharp turn' (Chapter 4), Razuvaev shows quite clearly that at this moment, White should have kept the queens on the board.

Razuvaev gave his whole soul to his training work, over many years. Indeed, the word 'work' is hardly appropriate here, as it was something he lived and breathed. He had a very individual approach to the creative work of his students, based on their personal characteristics and style.

It should be said that the pedagogic gift was developed in Yuri Sergeyevich from his earliest years. He had an example to follow: at

the age of 18, he was taken as a pupil at the Botvinnik school and later became the latter's assistant, and he absorbed very well the wise style in which the great champion interacted with his listeners. And more than any other of Botvinnik's pupils, he took his principles and applied them in practice. When already an experienced grandmaster, Razuvaev began actively passing on his knowledge and experience to young talents. Reading the memories of him in this first chapter, you will see how warmly and respectfully his pupils remember their great teacher.

Formally, one can regard ex-Women's World Champion Alexandra Kosteniuk and GM Evgeny Tomashevsky as pupils of Razuvaev. But in practice, over many years, he helped numerous other famous grandmasters, from Anatoly Karpov (during the 1973-4 world championship cycle) to the current World Champion Magnus Carlsen (in 2005) and Fabiano Caruana, who in 2008 studied the subtleties of the Catalan with him (Razuvaev was an unsurpassed expert on the Catalan). But any active player could obtain endless consultation with the maestro – his generosity knew no bounds.

I myself have had many experiences of this. In 1992, Yuri Sergeyevich and I took part in the Dortmund Open, where I, just 16 years old, shared the victory with

Lputian and Azmaiparashvili. This was my first major success, after which I was noticed. Kasparov also played in Dortmund, in the main tournament – and won it. He knew me before, from the Botvinnik-Kasparov school, and Razuvaev was then the head coach of the Russian team. And at the closing of the tournament, when we stood at the buffet, Yuri Sergeyevich suddenly addressed me with the words: ‘I have conferred with Garry Kimovich... we both liked your play and we want to take you to the Olympiad.’

It was a complete surprise! Yuri Sergeyevich immediately warned me that there would be a lot of friction in Moscow – it would not be easy to force through this decision, but he assured me that they were serious and would do their best. In the end, he asked if I minded. Of course, there were no objections, and from that day our long acquaintance began. I was taken to the Olympiad after a battle – following a big debate, Kasparov with Razuvaev gave their personal guarantee, saying: ‘If he plays badly, we will take the blame!’ The Manila Olympiad was the start of my take-off as a player, so that day in Dortmund is very memorable for me.

At the Olympiad, almost everyone lived two to a room, and Yuri Sergeyevich took responsibility for me. This brought us closer, and since then we have always been on

very good terms. He watched my successes, and we regularly met. Addressing his friends, he always used the familiar form of ‘you’, but with me it was always the formal ‘You’, which was characteristic for him.

He seemed to me a rare man, of which there are very few in the modern world. He had huge tact, innate intelligence – I would even say, he was aristocratic. Pleasant in communication, very positive and extremely benevolent. This is one of the reasons why he was always a good coach.

After becoming a World Champion, I liked to call him after some tournament and ask about his impressions. Or we just met somewhere to talk about life and about chess. I always appreciated his opinion highly. Yuri Sergeyevich had a fantastic quality: in the language of Kozma Prutkov [Translator’s note: Kozma Prutkov is the name of a fictional character, invented by a group of 19th century Russian satirical poets, in whose name they published many aphorisms and fables. All educated Russians are familiar with these quotes and frequently allude to them], he saw into the root of things, grasped incredibly accurately the essence of events. And, what is very important, he was able to state this in a brief form. He spoke a couple of phrases, and everything became clear!

There are only a few coaches in the world with such a deep understanding of chess, the highest class and with this ability to identify the most important thing, to structure, to draw an accurate conclusion from a large number of games and mistakes. He always got to the point – what to work on, where there is a weakness, what needs to be corrected. Sometimes these were not chess moments, but psychological or purely lifestyle. Yuri Sergeyevid perfectly understood that there is a connection between the game, achievements, and some things that seemingly are not related to chess. He could say: ‘Try to rest now, don’t play for a month’. Or: ‘Try to go to the cinema in the evening during the tournament.’

It was always between us: no one knew that he was helping me, through an old friendship. And not only me. Boris Gelfand worked with Yuri Sergeyevid until the latter’s death. First of all, it was pleasant to talk with him purely as a person – he had a great sense of humour, but he could always give advice, because he watched chess to the very end and from time to time he noticed things that escaped our attention. Few know about Razuvaev’s help to me and Gelfand, but we listened carefully to his advice.

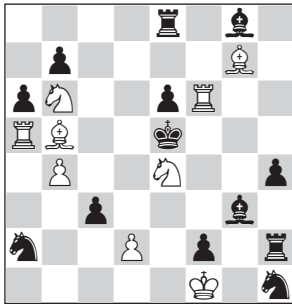
I should also mention Razuvaev’s scientific activity in the field of public education. Scrupulously

studying the problems of children’s thinking and working with major scientists, he developed an original methodology for developing abilities in children with the help of chess. He conducted experimental studies in ordinary schools in different regions of Russia and quickly achieved higher educational achievement among lagging schoolchildren. It was almost miraculous.

Various influential figures have been trying for years to introduce chess into the compulsory school curriculum. The benefit is obvious: schoolchildren acquire a sense of responsibility at every step, as happens in the process of a game of chess. Also, logical thinking is developed, something so necessary for making the right decisions. Razuvaev went further: he showed the unique role of chess for training the ability of the mind to work effectively. This is especially true when solving chess problems of mate in two or three moves, which develops observation and ingenuity, and stimulates mental endurance, over a tense search for the various candidate moves.

When thinking about the next move, players calculate the consequences of the decision in their head. Both the pieces and the chessboard are before their eyes, but you cannot move the pieces, so all their movements are performed with the help of the imagination – that is, the thinking

process happens as if blindfolded. At first, students are offered simple tasks, mainly for the purpose of developing visualisation, e.g. which piece should give check to the black king, and on what square, so that he has nowhere to move. Gradually, the tasks become more complicated; the apotheosis of difficulty could be the brilliant problem by the 19th century composer, Sam Loyd. This work of art Razuvaev demonstrated in his lectures and articles, so that everyone could realize what beauty is hidden in chess creativity.



Sam Loyd

First Prize, Checkmate 1903
Mate in three moves

So how does the solver find the solution? Naturally, the first thing that enters one's head is the attack on the black king. This is how novice players act. But there is another approach. We see that the white pieces are perfectly located (pay special attention to the horizontal and diagonal batteries of rooks and bishops), and only the knight on e4 is not protected. And it stands beautifully and controls

the important square d6, where the black king would like to flee. I would like to protect this knight with a bishop from the square d3. But then the black king attacks the unprotected bishop, and on 2.♔e2 Black promotes to a queen, with double check, and there is no time to give mate. Therefore, White starts with

1. ♔e2!!

Now after 1...f1♖++ there follows the unexpected and very beautiful move 2.♔e3!! (the point of the problem!) with inevitable mate on the next move, since one of the batteries will give check and mate, whilst 2...♔xb5 is followed by mate in one, in several different ways. And if the black king immediately takes the white knight with 1...♔xe4, then 2.♔d3++ (cooperation between bishop and king and the work of the horizontal



battery) 2...♔d4 3.♖f4 mate
(diagonal battery).

Nor is Black saved by 1...♔d4.

Then 2.♖f4+ e5 3.♗xg3 – mate
(the e5-pawn is pinned) using the
diagonal battery.

And finally, Black can set the trap
1...cxd2. Now 2.♔e3 is bad because
of 2...d1♗+ or 2...f1♗+. But winning
is 2.♖f8 (f7, f3)+ ♔xe4 3.♕d3 – mate.
And we work all this out in our
head, without moving the pieces.

The whole chess biography of Yuri
Razuvaev is a textbook example. He
was a pupil of the Botvinnik school,
a researcher and a practical player,
who achieved a great deal. He was a
man infinitely devoted to chess, but
at the same time widely educated,
self-critical and purposeful, he
looked almost an ideal figure for
great achievements. Yes, and talent
was not lacking either: a brilliant
memory, deep knowledge of all
stages of the game, a rare speed of
thought, accurate calculation of
variations, plus inexorable logic. A
real chess academician!

Yes, he was an academician. And
if such an academy existed, then

Razuvaev would have had one of
the prominent places in it – next to
such titans as Tarrasch, Rubinstein,
Réti, Nimzowitsch... the chess
activity of the hero of this book was
so multifaceted.

After reading the tributes of
contemporaries (Chapter 1, 3
and 5), you will see that my
words about Yuri Sergeyevich
are not an exaggeration. Here
he is remembered not only by
his students, but also by his
friends – well-known chess players
and coaches. They also comment
on his selected games (Chapter 2).
Then his best articles, speeches
and interviews (Chapter 4) are also
collected. This collective work of
an outstanding specialist can be
safely recommended to everyone
who loves chess. I am sure that
studying the creative heritage of
Yuri Razuvaev will bring you great
benefits.

I am very glad that fate brought me
into contact with such an amazing
person, and I regret that he left us
so early. I have great memories of
him.

‘Memories’ authors in alphabetical order

Viswanathan Anand, 15th World Champion

Evgeny Bareev, grandmaster

Lyudmila Belavenets, grandmaster, senior trainer FIDE

Magnus Carlsen, 16th World Champion

Boris Gelfand, vice-World Champion in 2012

Michele Godena, grandmaster, multiple Italian champion

Boris Gulko, grandmaster, champion of USSR and USA, senior trainer FIDE

Grigory Kaidanov, grandmaster, senior trainer FIDE

Albert Kapengut, international master, honoured trainer of Belarus,
senior trainer FIDE

Anatoly Karpov, 12th World Champion

Garry Kasparov, 13th World Champion

Lev Khariton, journalist, translator

Alexandra Kosteniuk, grandmaster, Women’s World Champion in 2008-
2010

Michal Krasenkow, grandmaster, senior trainer FIDE

Joel Lautier, grandmaster, champion of France, first president of the ACP

Irina Levitina, grandmaster, Women’s Champion of USSR and USA,
challenger for the Women’s World Championship

Adrian Mikhalchishin, grandmaster, chairman of FIDE Trainer’s
Committee

Alexander Nikitin, honoured trainer of USSR, senior trainer FIDE

Ilya Odessky, international master, trainer

Boris Postovsky, honoured trainer of Russia, senior trainer FIDE

Alexander Shashin, master of sports, trainer, analyst

Sergey Shipov, grandmaster, trainer, commentator

Boris Spassky, 10th World Champion

Evgeny Tomashevsky, grandmaster, European Champion 2009, Russian
Champion 2015

Veselin Topalov, FIDE World Champion 2005

Vladimir Tukmakov, grandmaster, senior trainer FIDE

Sergey Yanovsky, grandmaster, honoured trainer of Russia, senior trainer
FIDE

Igor Zaitsev, grandmaster, honoured trainer of USSR, senior trainer FIDE

Boris Zlotnik, international master, candidate in pedagogical science



With Miguel Najdorf, the legendary grandmaster from Argentina.

1975-1978 – grandmaster

11 Sicilian Defence B90

Yuri Razuvaev

Gudmundur Sigurjonsson

Cienfuegos 1975 (15)

Notes by Lev Psakhis

I am happy and proud to count Yuri Sergeyeovich Razuvaev as a friend. I have difficulty remembering when we first met, but serious, ‘adult’ relations started at the end of the 1970s. We met earlier though, at the Botvinnik chess school. His pupils loved him, naturally – everyone loved him – and even the stern Mikhail Moiseyevich often listened to the words of his mocking assistant! I doubt that Yuri Sergeyeovich remembered a 14-year old, not especially successful first-category player, but I will recall this acquaintance forever! Some years later, we began to meet only

at tournaments, spoke often and I learned a great deal (I hope!) from Yuri.

I still very much would like to speak more with him but, alas, that is no longer possible.

1.e4 c5 2.♟f3 d6 3.♞c3 a6 4.d4 cxd4 5.♞xd4 ♟f6

In the mid-1970s, the Najdorf Variation was no less popular than today.

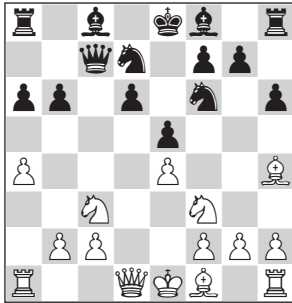
6.♞e3!? e5

I prefer 6...e6 to the text, although there are also many supporters of 6...♞g4.

7.♟f3 ♖c7 8.♞g5 ♞bd7 9.a4 h6 10.♞h4 b6

At one time, a very long time ago, I carefully studied the game Makarychev-Tseshkovsky, Tbilisi 1978, in which after 10...♞e7 11.♞d2 g5 12.♞g3 ♟f8 13.♞c4 ♞e6 14.♞e3 ♖a5 15.♞d3 ♞g6 16.0-0 h5 Black

managed to seize the initiative on the kingside, although, of course, the opponent's chances (especially his total control over the central light squares) should not be underestimated.



11. d2 b7 12. c4 e7

12...g5 13. g3 c5, Bronstein-Savon, USSR 1975, does not bring Black any real dividends, and the simple 14.f3!? guarantees White a small, but lasting advantage.

13. e2 0-0 14.0-0 f8?

Yuri did not much like this active black move and he awarded it a question mark, but in my opinion, wrongly! As a move, it does not spoil the black position, but nor does it greatly improve it. Black also faces a battle to equalise after 14...

g5 15. g3 c5 16.f3 e6 17. xe6!? fxe6 18. c4 xc4 19. xc4 ab8 20. fd1, Hübner-Hjartarson, Tilburg 1988.

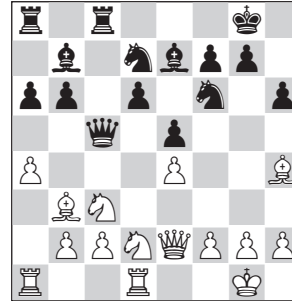
15. fd1 c5

In the well-known game Fischer-Olafsson, Reykjavik 1960, Black played much more resolutely:

15...g5 16. g3 f8 17.f3 e6 18. f2 g7 19. h1 f4 and after 20. e3?! d5! 21.exd5 c5 he even

managed to seize the initiative. White could also have played more strongly – 20. e1! with good play. Sigurjonsson could not decide on active operations and very soon had to pay the price for his quite unnecessary passivity.

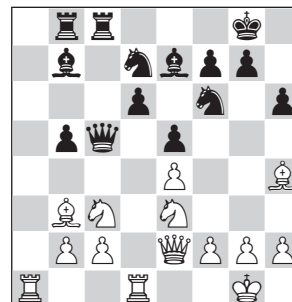
16. b3



16... ab8

If 16... c6 White has a wide choice: 17. c4!? xc4? (probably, 17... f8 is somewhat stronger, but Black is not insured against unpleasantness) 18. xc4 g5 19. g3 xe4 20. xe4 xe4 21. xd6 xd6 22. xd6, and the two white bishops control the whole board, Westerinen-Browne, Mannheim 1975, or 17. c4!? b5 18. a5 with excellent play.

17. c4± b5 18.axb5 axb5 19. e3



There are many weaknesses in the black camp: d5, f5, and the powerful white knight may take up position on g4.

It is important to note that 19...g5? 20.♙g3 ♘xe4 meets with an immediate refutation – 21.♖h5+–. It is also hard to give Black good advice!

19...b4 20.♙xf6!

Yura happily goes in for multiple piece exchanges, and no wonder, as the enemy dark-squared bishop takes almost no part in the game and merely pursues an unenviable role as a spectator.

20...♗xf6 21.♗cd5 ♗xd5 22.♗xd5 ♙g5 23.g3!

A simple, but very strong move. White unhurriedly prepares h2-h4, and the unfortunate black bishop will soon be expelled from the square g5, from where it to some extent defends his own king.

23...♖a8

Undoubtedly, stronger was 23...♖f8!?, defending f7 in advance, but Black is not satisfied with this and tries to reduce the increasing pressure of the white pieces by means of exchanges.

24.h4

More precise was 24.♖xa8! ♖xa8 25.h4 ♙d8 26.♖f3, and after the practically forced 26...♙xd5 27.♖xd5 ♖c7 28.♖b5 White's strategy would bring him material rewards. However, White's minimal inaccuracy does not change the position significantly at all.

24...♙d8 25.♖f3 ♙xd5?!

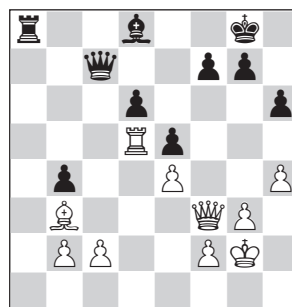
One gets the impression that Black has lost any hope of a satisfactory outcome to the game and does not put up the resistance he should.

White would still have a fair bit of work to do to win after the stubborn 25...♖xa1 26.♖xa1 ♙xd5 (it is hard to recommend 26...♙c6 27.♗xb4! ♙e8 28.♗d5+–) 27.♙xd5 ♙f6.

26.♖xa8! ♖xa8

26...♙xa8? would relieve Black of further suffering: – 27.♖xf7+ ♗h7 28.♖g8+ ♗g6 29.♖e8+ ♗h7 30.♙g8+ ♗h8 31.♙f7+ ♗h7 32.♙g6#.

27.♖xd5 ♖c7 28.♗g2



28...♖b8

28...g6? 29.♖xd6! would be tantamount to resignation.

29.h5!

White takes control of the square g6 and prepares to gang up against d6.

29...♙g5 30.♖d3 ♖b6?

Black's last mistake in this game.

The more tenacious 30...♙e7 31.♖b5!? ♖xb5 32.♖xb5 d5! would have allowed him to prolong this far from hopeless struggle.

31.♖a5 ♖b8 32.♖a6 ♙e7 33.♖d5 ♙f8 34.♖a4

In such positions, the stronger side should never hurry! 34.♖c6 ♔d7
35.♗c4 looks good, but after 35...d5! the game could easily be prolonged.
34...♗d7 35.♞a5 ♗b7?!

Black mistakenly considers that the exchange of queens helps the defence. 35...♗c7!? would have allowed White to continue the pleasant game of cat and mouse, but now things end quickly.

36.♗xb7 ♞xb7 37.♙d5!+-

The move 37.♞a8 also looks good, but in this case, Black would keep his last chance 37...d5!?

37...♞c7

Nothing is now changed by 37...♞b8
38.♞a7.

38.♞b5 ♞xc2 39.♞xb4 ♞c7

Defending the 7th rank, but White no longer really needs this! 39...♙h7
40.♞b8 looks equally hopeless!

40.♞b8 ♞a7 41.b4

Black resigned. No wonder: the pawn has started advancing and stopping it is quite impossible. A simple but very effective strategic game by White, and a textbook example for this type of position.

12 Grünfeld Indian Defence D86

Yuri Razuvaev

Wolfgang Uhlmann

Amsterdam 1975 (13)

Notes by Yuri Razuvaev

The realisation of an advantage and counterplay

This game has its pre-history. I faced a choice: French or Grünfeld Indian.

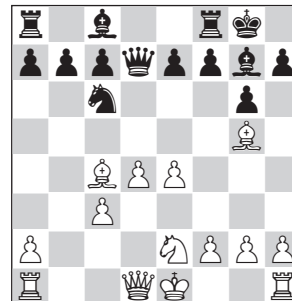
It was well known that the German GM played no other openings as Black. The previous evening, after a dismal defeat against Hamann, I had the depressed mood familiar to chess players.

Then, remembering the advice of the poet Iskander, to draw profit even from one's misfortunes, I directed all my attention towards finding a refutation of Simagin's variation. Here, practical experience and knowledge came to my aid. Late in the evening, I felt I had found the truth...

1.d4 ♘f6 2.c4 g6 3.♘c3 d5 4.cxd5 ♘xd5 5.e4 ♘xc3 6.bxc3 ♙g7 7.♙c4 0-0 8.♘e2 ♘c6

This variation was introduced by Simagin. Black does not rush to challenge the enemy pawn centre.

9.♙g5 ♗d7



10.0-0

More principled was 10.♗d2, keeping the possibility of an attack on the king (h4-h5).

10...♘a5 11.♙d3 c5

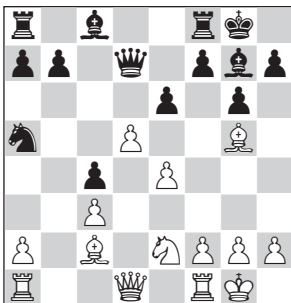
Unnecessary haste. Now White is able to clarify the central position favourably, after which Black finds it hard to create counterplay. More flexible was 11...b6. After 12.♗d2

♙b7 13. ♙h6 e6 14. ♙xg7 ♚xg7 15. h4 we transpose into my game against Karasev, Chelyabinsk 1972. Black played poorly and lost quickly: 15... f5? 16. exf5 exf5 17. ♖g5 ♜ae8 18. ♜f4 ♖e7 19. ♖g3 ♜h8 20. d5! ♖d6 21. c4 ♙c8 22. ♜fe1 ♜b7 23. h5! ♜g7 24. hxg6 hxg6 25. ♜e6! etc. After the routine 15...c5 16. h5 cxd4 17. cxd4 ♜c6 18. ♖f4 e5?? we reach the diagram, mistakenly printed in a certain opening monograph. In reality, of course, the queen should be on e7. Frankly, this diagram was a secret hope of mine for a while, as the chance to give mate by 19. h6+ ♜g8 20. ♖f6 immediately after an equals sign was so tempting that I was convinced that one should play ♙g5. After all, then ...♖e7 is impossible.

12. d5 c4

12...e6 forces White into a favourable exchange sacrifice. For example, 13. c4 ♙xa1 14. ♖xa1 f5 15. dxe6 (not forced, but not the worst move) 15... ♖xe6 (if he takes the bishop with 15... ♖xd3 Black is mated after 16. ♙h6) 16. exf5 gxf5 17. ♜f4 ♖f7 18. ♜d5 ♜c6 19. ♜e1, and White's attack is very dangerous.

13. ♙c2 e6



14. ♖d2

In similar circumstances, Petrosian and Gligoric against Uhlmann took on e6, which is weaker. The white d-pawn has a great future ahead and should not be exchanged off.

14...exd5 15. exd5 b6 16. ♜ad1 ♜e8 17. ♜g3 f5

The threat was 18. ♜e4.

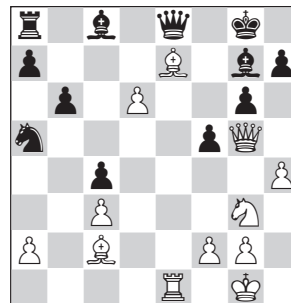
18. ♜fe1 ♙b7 19. d6!

The d-pawn wants to queen and is not easy to stop. At first glance, White has released the ♜a5 from its prison, but in fact, the attack on the black king prevents the latter from bringing the errant knight back home. And, banal though it is to say it, the queen is a poor blockader, as is clear from the following variation: ♜xe8+ ♜xe8, ♙a4 ♖xa4, d7 etc. Joint analysis after the game did not reveal a satisfactory defensive plan for Black and maybe there simply is not one.

19... ♜xe1+ 20. ♜xe1 ♙f8 21. ♙e7 ♙g7

On 21... ♜e8 there follows the nice variation 22. ♜xf5! gxf5 23. ♖g5+ ♙g7 24. ♙xf5 ♖xd6 25. ♙e6+!, and White wins.

22. ♖g5 ♖e8 23. h4 ♙c8



In such positions, one can play for the attack, but as one gets older, one gravitates towards simplicity. Therefore I wanted to win the game cleanly, without exchanging pieces. For this purpose, I exploited a method of play rare in my practice.

24. ♖d2 ♕d7 25. ♖g5 ♜c8

On 25... ♜f8 there would have followed 26. ♖e7, and if 26... ♖d8, then 27. ♖xg7+.

26. h5! ♜c6

After 26... ♗c6 27. h6 ♕f8 28. ♖d5+ Black gets mated.

27. ♖e7 ♜f8

Mate results from 27... ♖e8 28. ♖xg7+ ♗xg7 29. ♖d4+ ♗g8 30. h6.

Instead, 27... ♕f8 loses because of 28. ♖xd7.

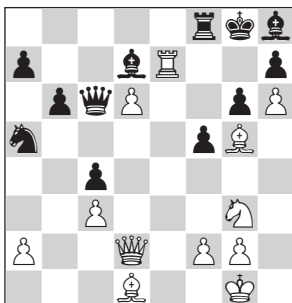
28. h6

Of course, 28. ♖xg7+ was also sufficient, but this is contrary to the main conception.

28... ♕h8 29. ♕d1!

Black resigned.

The final position is very artistic:



13 Sicilian Defence B38

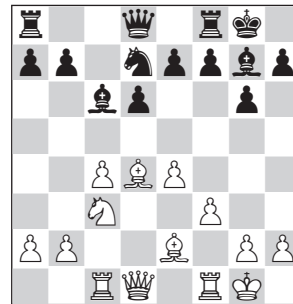
Yuri Razuvaev

Karoly Honfi

Cienfuegos 1976 (13)

Notes by Boris Gulko

1. e4 c5 2. ♗f3 ♗c6 3. d4 cxd4 4. ♗xd4 g6 5. c4 ♖g7 6. ♕e3 ♗f6 7. ♗c3 0-0 8. ♕e2 d6 9. 0-0 ♕d7 10. ♜c1 ♗xd4 11. ♕xd4 ♖c6 12. f3 ♗d7?!



At the time, this continuation was regarded as best, thanks to its success in a game Tukmakov-Velimirovic at Odessa the previous year, but it immediately ceased to be so regarded after Razuvaev's real improvement here. Black started instead to play the preliminary 12... a5!

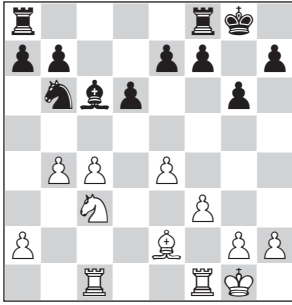
13. b4!

In the above-mentioned Odessa game, Tukmakov played the tame 13. ♗h1, and Velimirovic seized control of the dark squares by means of 13... ♕xd4 14. ♖xd4 ♖b6 15. ♖d2 ♗c5.

13... ♕xd4+ 14. ♖xd4 ♖b6?!

This plan meets a brilliant refutation. A more modest plan of play is connected with 14... b6.

15. ♖xb6 ♗xb6

**16.e5!!**

This pawn sacrifice in the endgame requires not so much deep calculation as intuition and confidence.

16...dxe5

In my opinion, Black should settle for defence in depth by means of 16...♙f8 17.exd6 exd6 18.♙fd1 f5. But this is unpleasant and it is not easy to calculate the consequences of the capture.

17.b5 ♖e8

It is necessary to leave the square d7 for the knight. After 17...♙d7 18.c5 ♗c8 19.♗d5! the black pieces are almost stalemated.

18.c5± ♗d7 19.♗d5! e6 20.♗e7+!

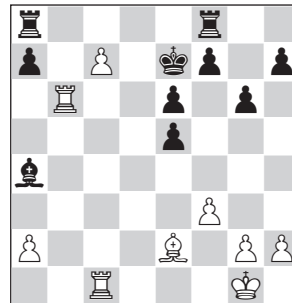
The knight will not easily escape from here, but this time, White had calculated everything precisely.

20...♗g7 21.c6 bxc6

Hunting the knight fails – 21...♗f6 22.cxb7! (worse is 22.cxd7? ♙xd7 23.♙c7 ♗xe7 24.♗d1 ♙fd8 25.b6 axb6 26.♙b5 ♙xa2 27.♙cxd7+ ♙xd7 28.♙xd7+ ♗f8 29.♙xb7 ♙b2, and the position is closer to a draw than a white win) 22...♙b8 23.♗c8! ♙xb7 24.♗d6 ♙b8 25.♙c7, and Black has no moves.

22.bxc6 ♗b6 23.c7 ♙d7 24.♙fd1! ♙a4

Again, there is no time to catch the knight – 24...♗f6 25.♙xd7 ♗xd7 26.c8♗. Now, however, it will perish, but not in vain.

25.♙d6! ♗f6 26.♙xb6 ♗xe7**27.♙b7!**

A study-like idea – the black king is driven into the centre into an unexpected mating attack.

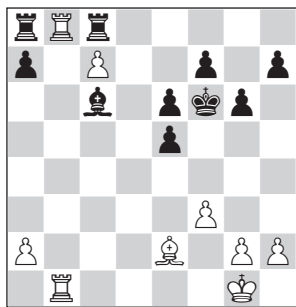
27...♗f6

Black avoids the main variation of the combination. Bad was 27...♙d7 28.c8♗ ♙axc8 29.♙d1 ♙fd8 30.♙b5, winning the bishop. The subtlety of White's idea is revealed in the variation 27...♗d6 28.♙b2! ♙d7 (no better is 28...♙c6 29.♙d2+ ♙d5 30.♙a6) 29.♙a6 ♙c8 30.♙d1+! ♗xc7 (or 30...♗e7 31.♙b8 ♙xa6 32.♙dd8) 31.♙c2+ ♗b6 32.♙b1+ ♗xa6 33.♙c3 with unavoidable mate.

28.♙cb1

Yura sees a winning variation and does not avoid it. If he had been a computer, he would have played 28.♙a6! ♙d7 29.♙cb1 ♙ac8 30.♙xa7 ♙a8 31.♙xa8 ♙xa8 32.♙b7 ♙xa2 33.♙d1!, and Black cannot even move the bishop.

28...♙c6 29.♙b8 ♙c8



30. ♖c1!

Because of this possibility, Yura played 28. ♖c1. Black loses a piece and because of the number of pawns remaining, has no chances to draw.

30... ♜xb8

He loses immediately after 30... ♙d7 31. ♖xa8 ♜xa8 32. ♙a6 ♙c8 33. ♖b1!.

31. cxb8 ♜ ♜xb8 32. ♖xc6 ♜b2

33. ♙c4 h5 34. h4 g5 35. hxg5+ ♙xg5

36. ♙h2 ♜b4 37. ♙b3 a5 38. ♖a6 ♜b5

39. ♖a7 ♙f6 40. ♙a4

Black resigned.

14 Scotch Opening C45

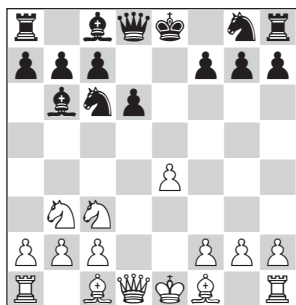
Viktor Kupreichik 2490

Yuri Razuvaev 2510

Byeltsy ch-URS sf 1977 (7)

Notes by Viktor Kupreichik

1. e4 e5 2. ♘f3 ♘c6 3. d4 exd4 4. ♘xd4 ♙c5 5. ♘b3 ♙b6 6. ♘c3 d6



7. ♘d5?!

Forward at all costs! He is counting naively on 7... ♘ge7 8. a4!.

The modern treatment is 7. ♖e2 with reasonable results for White.

7... ♜h4!

A precise reaction! White has to move his queen inconveniently.

8. ♖e2 ♙g4 9. ♖d2 ♙e6 10. ♙d3?

He should have played 10. ♘f4 or 10. ♖f4; in both cases, White can count only on equality.

10... ♙xd5 11. exd5 ♘e5 12. 0-0 ♘f6 13. ♙b5+

A waste of time, since the ♖a8 gets the possibility to come into the attack quickly. Nor is 13. ♖g5 ♖xg5 14. ♙xg5 ♘xd3 15. ♙xf6 gxf6 16. cxd3 ♘d7 very attractive, so it is hard to know what to recommend for White.

13... ♙f8 14. ♙e2

He could still try to hang on with 14. c3 ♘eg4 15. h3 ♘xf2 16. ♘d4 ♘2e4 17. ♖d3 ♘xd5 18. ♙c4 ♘ef6 19. ♙h1 – the ♖h8 is still not playing and White does have the two bishops.

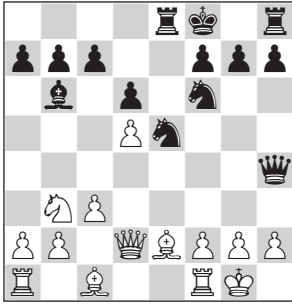
On 14. h3 there is the following remarkable variation: 14... ♘f3+!

15. gxf3 ♖g3+ 16. ♙h1 ♖xh3+ 17. ♙g1 ♖g3+ 18. ♙h1 ♖xf3+ 19. ♙g1 ♖g3+ 20. ♙h1 ♖h3+ 21. ♙g1 ♘g4 22. ♖f4 g5, winning.

14... ♖e8 15. c3

Losing by force.

On 15. h3 there follows 15... ♘e4 16. ♖f4 ♖xf4 17. ♙xf4 ♘xf2 18. ♖xf2 ♘g6, and White cannot hold everything. But this would still have prolonged his resistance.



15...♖eg4 16.♙xg4 ♘xg4 17.h3

Or 17.♗f4 g5.

17...♙xf2+ 18.♖h1

If 18.♗xf2 ♘xf2 19.♗xf2, then
19...♗e1+.

18...♙e3 19.♗e1 ♖f2+ 20.♖h2

♗f4+ 21.g3 ♗f5

White resigned. What can one say?
Convincing and instructive!

15 Old Indian Defence A44

Vladimir Bagirov 2480

Yuri Razuvaev 2510

Baku ch-URS 1977 (9)

Notes by Yuri Razuvaev

Playing without rules

1.d4 g6 2.c4 ♙g7 3.♘c3 c5 4.d5 e5

The game was played in the 9th round and so far, I had not scored a single win. Those who have been in a similar situation will understand my mood, from the very first moves.

5.e4

Of course, none of this is new. In Vaganian-Romanishin, Leningrad 1977, White played 5.dxe6 dxe6 6.♗xd8+.

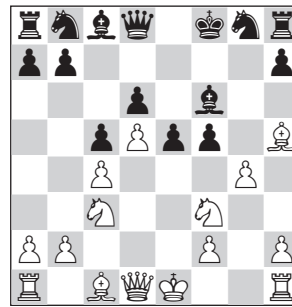
5...d6 6.♙e2 f5 7.exf5 gxf5 8.♙h5+ ♖f8 9.♖f3 ♙f6

Standard moves do not work here. After 9...♖f6 10.♘g5 White gets the initiative, with good chances of a 20-move crush.

10.g4?

Bagirov hurries to punish me for my casual attitude to general opening principles. But Black's set-up is more paradoxical than outright bad.

White's idea would be justified in the event of 10...fxg4 11.♘d2, and we have a technical position on the board. Black instead finds a way to play to seize the initiative.



10...e4! 11.♘g1

After 11.♘d2 ♙xc3 12.bxc3 ♗h4 the 'Tarrasch' mobile light-squared bishop (the great champion would not exchange this piece) gets into trouble.

11...♘d7

Weaker was 11...♙xc3+ 12.bxc3 ♘d7 13.♙f4, and White has the advantage. Beginning with the 10th move, the game reminds one of a battle in the mountain – one wrong step and you're over the precipice.

12.gxf5

Black obtains a stable advantage after 12.♙f4 ♘e5 13.♙xe5 ♙xe5.

12...♙xc3+! 13.bxc3 ♘e5 14.h4!

A great manoeuvre! White takes h4 away from the black queen, at the same time bringing the ♖h1 into the game. A tense battle is underway for every square on the kingside.

14...♙xf5 15.♘e2 ♘d3+ 16.♙f1 ♗f6

The threat was 17...♙h3+ 18.♙xh3 ♗xf2#. White's next move is forced.

17.♙e3 ♙g6!

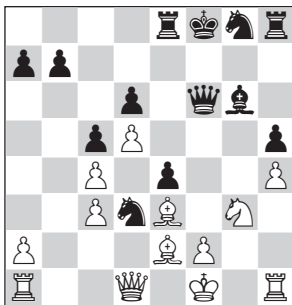
The second critical moment. The natural 17...♘h6 leads to the loss of the initiative after 18.♘g3 or 18.♗d2. Now, of course, bad is 18.♙xg6 hxg6, and White comes under a crushing attack.

18.♘g3 ♗e8 19.♙e2

Significantly weaker is 19.♗g4 because of 19...♗xc3! 20.♙g2 ♘f6! 21.♙h6+ ♙f7, and Black should win.

19...h5!

A difficult move. Black does not allow the white pawn to h5, which leads to the loss of many squares on the kingside, whilst at the same time, a new idea appears – ♖h7-f7. The attempt to give the game a forcing character with 19...♘xf2 20.♙xf2 e3 21.♖h2 leads to complications unfavourable for White.



20.♙g2

More pragmatic was 20.♗d2, because Black would have to make a choice:

A) 20...♘e7 21.♙g2 ♘f5, and it is hard for White to defend.

B) 20...♘xf2 21.♙g5 (worse is 21.♙g2 ♘xh1 22.♖f1 ♘xg3 23.♖xf6+ ♘xf6 24.♙xg3 ♙f7) 21...♗f7 22.♙g2 ♘xh1 23.♖f1#;

C) 20...♘xf2 21.♙g5 ♘xh1+! 22.♙xf6 ♘xg3+ with rich play for Black, although it would be hard to find the correct path through this labyrinth.

Bad would have been 20.♘h5 ♙xh5 21.♙xh5 ♗e5! with a strong attack for Black.

20...♘f4+ 21.♙xf4 ♗xf4 22.♗c1

After 22.♙xh5 White loses a knight: 22...♙xh5 23.♘xh5 ♗f3+.

Fearing an attack on his king, White goes for an exchange of queens.

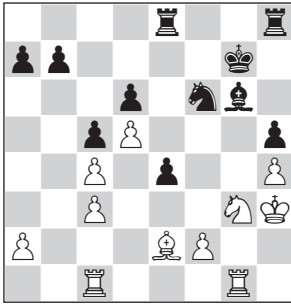
22...♗xc1 23.♖axc1 ♘f6 24.♖hg1 ♙g7!?

He should have considered the simple 24...♘d7.

The aim of Black's last move is as follows: put the king on h6, to defend the ♙g6 and ♘h5, then the rook goes to f8 and the knight transfers to e5. In reply, Bagirov undertakes an interesting counter-plan. The battle again swings from move to move.

25.♙h3!

Worse would have been 25.♙f1 ♙h6 26.♙e1 ♖hf8 with a large advantage to Black.



25...♔h6!

At this moment, I really feared that my opponent and the spectators would accuse me of a childish prank.

26.♞g2 ♞e5!

The start of forcing manoeuvres.

27.♞cg1 ♟e8 28.♝f1

The same variations as in the game result from 28.♔h2 ♝g4+ etc.

28...♟d7+ 29.♔h2 ♝g4+ 30.♟xg4 hxg4 31.♝e3

It may appear that White has taken the initiative again, but Black has at his disposal a counter-blow of fearful strength.

31...♟g6! 32.♟g3

Not, of course, 32.♝xg4 because of 32...♞xh4+ etc. Now Black has the interesting move 32...♞f8, and if 33.♝xg4, then 33...♞f3+ 34.♔h2 ♟h5!!, and White is in zugzwang. White's best is 33.♞b1 and on 33...b6 – 34.♝xg4.

32...♟h5 33.♞b1 b6

Maybe stronger is 33...♟c8. Now White again obtains counterplay.

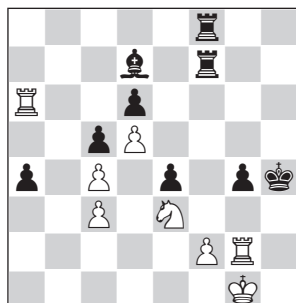
34.a4! ♞e7 35.a5 bxa5 36.♞b7 ♞f7 37.♞xa7

An interesting finish results from 37.♝f5 ♞xf5 38.♞xd7 ♞f3+ 39.♔h2 ♞h3+ 40.♟g1 ♞b8 41.♞g3 (41.♟f1



The return from Solingen 1979. Left to right: Vladimir Bagirov, Alexander Kochyev, Yuri Razuvaev, Vasily Smyslov and Mark Dvoretsky. Lev Alburt is missing; he defected.

♖b1+ 42.♔e2 ♜b2+) 41...♜b1+ 42.♔g2
 ♜hh1!, and Black wins.
37...a4 38.♔h2 ♜hf8 39.♔g1 ♔xh4
40.♜a6



40...♜f6?

The dreaded 40th move. My hand falters, with flag hanging. Correct was 40...♜b8.

41.♜a7

A mistake in return. White gets drawing chances with 41.♜h2+ ♔g5 42.♜h7. Here the game was adjourned.

41...♜f7

The sealed move.

42.♜a6 ♜b8! 43.♜h2+

White also loses after 43.♜xd6 ♜b1+ 44.♔h2 (44.♔f1 e3) 44...♔g5.

43...♔g5 44.♜xd6 ♜b1+

Also sufficient was 44...g3!.

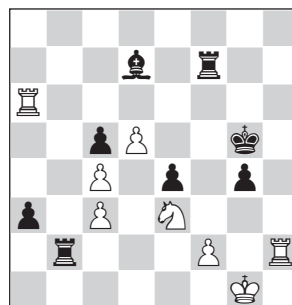
45.♔g2

An effective finish ensues after 45.♔f1 g3 46.♜g2 ♜xf1+ 47.♔xf1 ♔h3, and Black wins.

45...♜b2 46.♔g1 a3

Two steps are needed for the pawn to queen, at the same time defending against the check f2-f4. Now White has a large, but hopeless choice.

47.♜a6



47...g3!

After the game, it became clear that we had both analysed the adjourned position down to this point, and did not find anything better for White.

48.fxg3 ♜xh2 49.♔xh2 ♜f2+ 50.♔g1 ♜e2 51.♜xa3

No better was 51.♔f1 a2.

51...♜xe3 52.♜a5 ♜xg3+ 53.♔f2 ♔f4

White resigned.

16 Grünfeld Indian Defence D87

Yuri Razuvaev

Vladimir Malaniuk

Moscow ch 1978

Notes by Evgeny Tomashevsky

Yuri Sergeevich was always characterised by his creative principles. I remember with what enthusiasm he told me how interesting it is to be at the forefront of theory, to struggle with the best minds in currently topical schemes, to take an active part in the 'arms race' of the latest ideas. This approach, coupled with an exceptional analytical talent, and tremendous capacity for work,

allowed him to accumulate to his account a huge number of new opening ideas, plans, and concepts. In turn, this allowed Yuri Sergeevich to successfully conduct theoretical debates in practice. The game under consideration looks quite modern – but let's not forget that it was played 37 years ago, at a time when the theory of the main line of the most popular subsequent openings was just beginning to be created ...

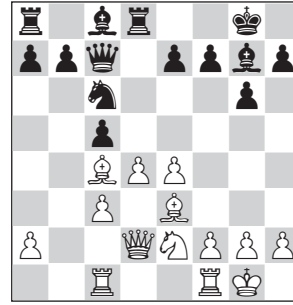
1.d4 ♘f6 2.c4 g6 3.♝c3 d5 4.cxd5 ♘xd5 5.e4 ♘xc3 6.bxc3 ♙g7 7.♙c4 c5 8.♘e2 0-0 9.0-0 ♘c6 10.♙e3

The tabiya of the variation and one of the key crossroads of the whole opening.

10... ♖c7

The most popular continuation, if one judges by the statistics of the whole history of the variation. Black has tried various different ways of obtaining counterplay and for a long time, the main line was 10...♙g4 11.f3 ♘a5, which was the scene of various battles in the Karpov-Kasparov match at Seville. There is a great deal of theory and practice in the line 10...cxd4 11.cxd4 ♘a5, whilst Black has also tried 10...♘a5, 10...♙d7 and even 10...♖a5, whilst in our day, the line preferred by the main Grünfeld Indian specialists is 10...b6.

11.♞c1 ♞d8 12.♞d2



Here too, White has a wide choice, the principal alternative being 12.♙f4.

12... ♘e5

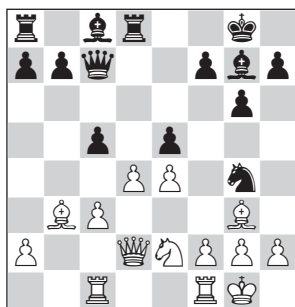
Vladimir Pavlovich Malaniuk, later a well-known and strong GM, but then just a 20-year old youngster, also heads for the most principled variation and chooses the line popular at that time. It was notable for two defeats suffered in the line by Svetozar Gligoric, in the tournament at the 4th Vidmar Memorial, Ljubljana/Portoroz 1977, against Savon and Tshshkovsky (these names tell you a lot about the popularity of the system at the time). Great discussion also took place at other times around the alternative continuations: 12...♖a5, 12...a6, 12...b6.

13.♙b3!

Yuri Sergeevich always had his own view of theory. This move can be considered strongest. It is only right to mention the approach of the legendary Yugoslav Svetozar Gligoric, whose two above-mentioned defeats in this line had nothing to do with the opening: 13.♙d5 e6 14.dxe5 (somewhat

illogical is 14.♔b3!?, although it is interesting that this move also earns the approval of the powerful modern computers. The pendulum manoeuvre was seen in the original stem game of the variation (according to the database) which was Goormachtigh-Mack from the European Junior championships in 1973/74! 14...exd5 15.♙g5 (15.exd5 could transpose after 15...♙xe5, but here the queen capture is also not bad) 15...♖e8 16.exd5 ♙xe5 17.♘g3 (in the seventh round against Tseshkovsky, Gligoric preferred 17.f4!? ♙g7 18.d6 ♖c6 19.♙e7 with a very complicated game, in which White later squandered good chances) 17...f5 18.f4 (a risky decision, as White can hardly be worse after the simple 18.♖fe1 ♙d7 19.h4) 18...♙d6 19.♖f3 ♗g7 20.♖cf1 ♙d7, and White's subsequent desperate attempts to attack did not bring success (Gligoric-Savon, 5th round).

13...♘g4 14.♙f4 e5 15.♙g3



15...♗e7

According to old commentaries, this move was the suggestion of no less than Mikhail Moiseyevich

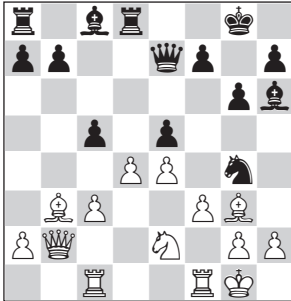
Botvinnik, and subsequent practice proves the correctness of the maestro that this is indeed the best try. In the game Muratov-Kremenetsky, USSR 1974, there followed 15...♙h6?! (interestingly, other black players fell into this trap subsequently) 16.♙xe5! (the most convincing, although Black's game is not brilliant after the calm 16.♗d3!?) 16...♗xe5 (16...♙xd2 17.♙xc7 ♖d7 18.♙f4 ♙xc1 19.♖xc1±) 17.♗xh6 ♗xe4?! (more tenacious is 17...♘xh6 18.dxe5 ♘g4, trying to defend a difficult endgame) 18.♙xf7+! ♘xf7 19.♗xh7+ ♔f6 20.♘g3 ♗e7 21.♘e4+!! ♗xe4 22.♖ce1, and White won. An excellent combination!

16.f3!?

Interestingly, this principled move did not find followers amongst leading players, being used subsequently only in a few correspondence games. In 2010, at the Khanty-Mansiysk Olympiad, the variation had a test at the elite level in the game Topalov-So, where White also preferred the tempting 16.h3!? ♘f6 17.♗e3 exd4 18.cxd4 cxd4 19.♘xd4 ♘g4 20.hxg4 ♙xd4 21.♗f3 ♙e6 22.♖c7 ♖d7 23.♙h4! ♗xh4 24.♖xd7 ♙xd7 25.♗xf7+ ♔h8 26.♗d5!? (26.♗xd7 ♖d8 with good drawing chances for Black) 26...♗f6 27.g5 ♗g7 28.♖d1 ♙xf2+ 29.♔xf2 ♖f8+ 30.♔g3 (30.♔g1!?) 30...♙c6, and here 31.♗d6! supports the assessment 'play for two results', although it remains an open question whether White's advantage

is sufficient to win, as does the question of which pawn should drive away the knight at move 16. Gradually Black, realising the danger of his position (at least in a practical game) began to seek more solid ways to develop at an earlier stage.

16...♙h6 17.♖b2



17...c4?!

Idealistic, but not sufficient. Weak is 17...♙xc1?! 18.♖xc1; nor does the intermediate check 17...♙e3+?! 18.♔h1 help Black in the least. Too passive is 17...♗f6?! 18.♙xe5 ♙xc1 19.♖xc1.

The only correct move is 17...♗e3!, which was tested in the above-mentioned correspondence games. 18.♖fe1 ♙e6! (18...c4 19.♙a4 leads to the main line, whilst the inclusion of 18...a5 19.a4 or 19.a3 doesn't look as though it helps Black much). Wesley So could have gone for this line too, as things look fairly unclear: 19.♙xe5!?. This exchange sacrifice (or, to be more exact, unbalanced exchange) in my opinion, poses Black difficult problems – 19...♗c4 20.♙xc4 ♙xc1 21.♖xc1 ♙xc4 22.♖f4 cxd4 23.cxd4

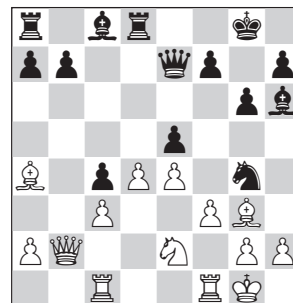
with full compensation and easy play for White. Otherwise it is hard for him to control events on the board.

For example, harmless is 19.♙xe6 ♖xe6 20.d5 ♗a6, whilst after 19.d5 c4 20.♙a4!? (20.dxe6 cxb3 21.axb3 (21.♖xb3 ♖xe6) 21...♖xe6 (21...f6 22.c4! with the idea of ♗d5) 22.c4 ♖d3 23.♙xe5 ♖ad8) 20...♙c8 (20...♙d7!?) 21.♙f2 f5 22.♗g3 f4 (22...♗xg2!? 23.♔xg2 ♙xc1 24.♖xc1 f4) 23.♙xe3 fxe3 Black plays ...a7-a6 and ...b7-b5 and obtains decent compensation for the pawn.

It would be interesting to know whether Yuri Sergeyevich analysed 17...♗e3! and if so, what conclusions he reached. It hardly seems realistic to untangle this mess 'manually', without preparation (even with the computer it is not easy!), but Razuvaev was one of those analysts who could anticipate future theory by decades...

18.♙a4!

Now White can permit himself this calm bishop move.



18...♗e3

Slightly too late! Although after 18...♙xc1 19.♖xc1 ♗f6 20.♙xe5 ♗h5

21.h3 a6 it is still too early to speak of a decisive advantage for White, he simply dominates the board. It is very hard to decide on desperate measures like 18...b5!? 19.♔xb5 (less clear is 19.♖xb5!? ♕d7 20.♗a6, although here too, White has the advantage) 19...♖b8 20.fxg4 ♕e3+ 21.♔h1 ♕xc1 22.♗xc1 a6 23.a4 axb5 24.♕xe5 ♖b6 25.a5 ♗e6 26.♗f2, and White retains his advantage, although the opponent has far from lost all hope of fishing in murky waters.

19. ♖fe1 f5?!

Malaniuk is a player of an aggressive style, and very much shared the attitude of Mikhail Tal: 'I play cheekily'. However, this second active move (the first was 17...c4) is a more serious inaccuracy, which meets with a decisive refutation.

After the patient 19...f6 20.♕f2 (20.♖b1!?) 20...a6 (20...f5!?) 21.♗g3 b5 22.♕xe3 ♕xe3+ 23.♖xe3 bxa4 24.d5 Black's position is not all sweetness and light, but he retains resources for a tenacious defence.

20. ♕xe5!

Now White quite rightly is not satisfied just with good compensation for the exchange after 20.exf5!? ♗xf5 21.♕xe5 ♕e3+ 22.♔h1 ♕xc1 23.♗xc1.

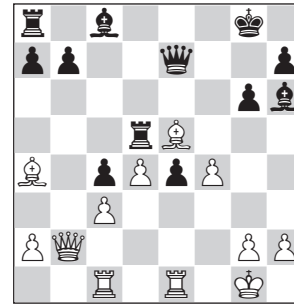
20...fxe4 21. ♗f4!

The key resource.

21...♗d5 22. ♗xd5

Also good is 22.♖xe4, but there is no need for this.

22...♖xd5 23.f4!



An interesting moment: Razuvaev plays a whole series of moves which are the computer's first choice, but in the pre-computer era! If the game were being played today, he would probably fall under suspicion! White has a technically winning position, which Razuvaev conducts to victory easily and irreproachably.

23... ♕f5

He also loses after 23...♖xe5 24.fxe5 ♕xc1 25.♗xc1 ♕f5 26.♕c2.

24. ♖b1 ♖a5 25. ♕c2 b6 26. ♕xe4 ♕xe4 27. ♖xe4 ♗d8 28. ♗e2 ♗f7

29. ♖f1

Starting a direct attack.

29... ♖a3 30.f5 gxf5 31. ♗g4+ ♔f8 32. ♗g3 ♗d7 33. ♗gf3 ♔g8 34. ♖xf5

Black resigned.

A game played practically perfectly by White, without a single error! Winning such a game against a strong and inventive tactician, in a sound positional opening, is especially worthwhile. In my view, this opening forms a kind of bridge between the second half of the 1970 and the best examples of modern-day dynamic chess.