

## Two Knights Defence

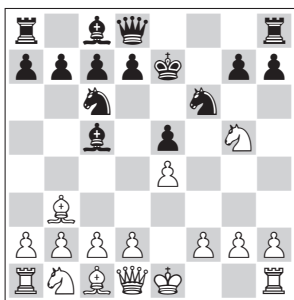
Traxler Gambit KP 12.4 (C57)

# Another Look at the Traxler Gambit (3):

## 5.♖f7 ♔e7 6.♖b3

Maarten de Zeeuw

1. e4 e5
2. ♘f3 ♘c6
3. ♙c4 ♙f6
4. ♘g5 ♙c5
5. ♖f7 ♔e7
6. ♖b3



In Yearbook 63 we dealt with the side-line 5.d4, while 5.♖f7 ♔e7 6.♖d5 was discussed in Yearbook 65. The lines arising after 5.♘f7 will be the subject of future installments.

6.♖b3 keeps d5 clear for the queen's knight, but more importantly it allows White a freer choice of moves after 6...♗f8.

### 6...♗f8

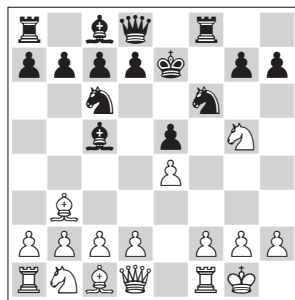
6...d6 (as after 6.♖d5, this prevents White from castling kingside – 7.0-0? ♖g4 – but White should avoid that anyway; 6...♗e8 7.d3 is likely to transpose) 7.d3 (mentioned by Heisman without further analysis; 7.d3 clears d2, thereby threatening 8.♘f7 ♗f8 9.♘h8 ♖f2 and now not the losing 10.♗f1? ♖g4 11.♗d2 ♘e4 12.de4 ♖e3, but 10.♗d2! win-

ning) 7...♘a5!? (7...♗f8 transposes to 6...♗f8 7.d3 d6) 8.♘f7? (clearly inferior to 8.♖e3±) 8...♖f2! 9.♗f1 (9.♗d2? ♘b3 with check!) 9...♗f8 10.♘h8? ♖g4+ 11.♗d2 ♘e4! 12.♗a5 ♖b6.

### 7.d3!

After 6.♖d5 the text move would be impossible, as it would ignore the threat 7...♖f2 8.♗f2 ♘d5. White's plan is ♖e3, ♘bd2, c3 and (unless Black exchanges on e3, when kingside castling is 100% safe) possibly queenside castling.

The main alternative is 7.0-0



A) 7...h6 8.♘f3 d6 9.h3? (excessive fear of the pin by ♖g4) 9...♗e8? 10.♘c3? ♗d8?, as in Bate-Händiges, cr 1978. In the Game Section I indicate the improvements 10...♗g6! =; 10.d3!±; 9...♘e4! =, and finally 9.d3! ♖g4 10.h3;

B) 7...d6 8.♘c3?! (intending ♘d5, but giving up the option to protect ♘f3 with the queen's knight; 8.d3! transposes to 7.d3

d6 8.0-0) with the important improvement 8...h6? (ignored by Heisman; 8...♖g4? loses to 9.♘d5; however, Heisman's idea 8...♘d4 is playable) 9.♘h7! =, a splendid discovery by Pálkövi, based on the line 9...♘h7 10.♘d5 ♗f7 11.♗h5 ♖g8 12.♘e7 ♗h8 13.♘g6 mate.

The main line continues 8...♗e8! 9.♘d5 ♗d8 10.c3 h6 11.d4 ed4 returning the extra pawn, after which it is hard to prove a substantial advantage for White (see Howell-David, Groningen 1995). This again indicates that in view of his backward development White's strategy should not be to open central lines against Black's king.

### 7...d6

A) 7...♗e8 8.♖e3 (8.♘c3 d6 9.♖e3 ♖e3 10.fe3 transposes to the main line) 8...d6 transposes to the text move 7...d6.

B) 7...h6 8.♘f3 d6 9.♖e3 (9.h3 ♗e8 10.♘c3 ♗g6 11.♘h4 ♗h7 12.♖e3± Mroczek-Sanner, cr 1997; 9.0-0± transposes to 7.0-0 h6 8.♘f3 d6 9.d3!) 9...♖g4 10.♖c5 (10.♘bd2±) 10...dc5 11.♘bd2 ♘d4 12.h3 ♖h5 (as pointed out before, Heisman is sometimes historically unreliable. He gives 12...h5?? as the actual course) 13.g4?! (13.c3! ♘f3 14.♘f3 and Black has no means to strengthen the pressure on ♘f3. If ♘f6 moves there follows g4) 13...♘g4! 14.♘d4??

(14. ♖e5 retains a small edge) 14... ♖d4 0-1 Paoli-H. Steiner, Reggio Emilia 1951.

**8. ♖e3**

8.0-0 (ignored by theory, and not entirely a part of the proposed plan, but even here White is better, provided he defends accurately) 8... ♖g4 9. ♘f3. Now 9... ♖e8 is examined in the Game Section in Braunsdorf-Augustat, cr 1993. White's best reply is 10. ♖e3!. 9... ♘d4 (now Black is ready to answer h3 by ripping up White's kingside) 10. ♖e3! ♖e8 (Paoli-Wagman, Reggio Emilia 1965/66) is also better for White after 11. ♖d4! ♖d4 12. c3 ♖b6 13. ♘bd2!. See the Game Section.

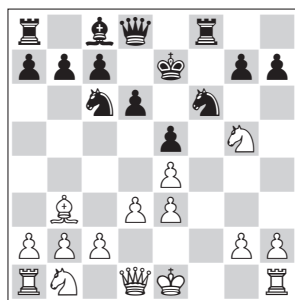
**8... ♖e3**

A) 8... ♖g4 9. ♖d2 h6 (Black allows White to capture on c5; in similar lines after 6. ♖d5 that is hardly an option, as ♖c6 might give Black a triple pawn. Here it still results in potentially weak pawns on c5 and e5) 10. ♖c5 dc5 11. h3 ♖d7 12. ♘f3 ♖e8?! (Trmal-Nun, Czech Championship, Jablonec 1962; 'Black has an initiative for the pawn'-Estrin 1966) 13. ♖c3 and White wins a second pawn and should be winning.

B) 8... ♖e8 9. ♖c5 dc5 10. ♘c3

(an effective way to stop the threat 10... ♖g4, to which the response would now be 11. ♘d5!) 10... ♘d4 11. f4! ± ef4 12. ♖d2 h6 13. ♖f4! (Elburg-Simmelink, cr 1998) 13... ♘b3 14. ab3 hg5 15. ♖c7 ♘d7 16. ♘d5 ♖f7 17. ♖d6 and the threat 18. ♘c7 will decide.

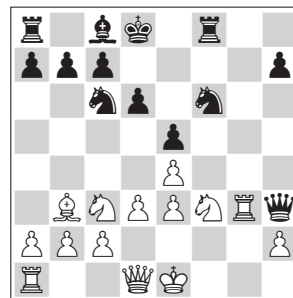
**9. fe3±**



An important change in the pawn structure. For White the risk of castling kingside has been reduced, nor is there any risk of an isolated double f-pawn after the return of ♘g5 to f3. On the other hand the pawn ending (a2/b2/c2/d3/e3/e4/g2/h2 vs. a7/b7/c7/d6/e5/g7/h7) is a draw in spite of White's extra pawn – he cannot break through or utilise his extra pawn. Of course after d3-d4 Black should avoid capturing on d4, dissolving

White's doubled pawns. For that reason White should not be too eager to swap major pieces via the f-file; instead he might pursue the exchange of knights on d5, resulting in a better structure for the pawn ending, or the advance d3-d4, with pressure on pawn e5. If Black seeks counterplay against pawn e3 by 9... ♘g4, White has either 10. ♘h7± or 10. ♘f3 ♘e3? 11. ♖d2 ♘g4 12. ♖g5±.

9... ♖e8 10. ♘c3 ♖g6 11. ♘f3 ♖g2 12. ♖g1 ♖h3 13. ♖g7 ♖d8 14. ♖g3



So far very similar to Anand-Beliavsky, Linares 1991, where 6. ♖d5 was played. The game Elison-Werner, cr 1999 continued 14... ♖h5 15. ♖e2 ♖g4 16.0-0-0 ♘a5 17. ♖a4 ♖d7 18. ♖d7 ♖d7 19. d4 ed4 20. ed4 ♘c6 21. e5 1-0.

**Bate,G  
Händiges,B  
cr 1978**

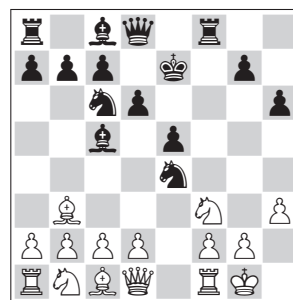
Like Heisman, Pálkövi is sometimes historically unreliable. He gives this game as Winkelmann-Koch, cr 1971, but this game had an entirely different course.

1. e4 e5 2. ♘f3 ♘c6 3. ♖c4 ♘f6 4. ♘g5 ♖c5 5. ♖f7 ♖e7 6. ♖b3 ♖f8 7.0-0 h6 8. ♘f3 d6 9. h3? =

White should not fear 9. d3! ♖g4. As compared to the line 7... d6 8. d3 ♖g4 9. ♘f3, which is evaluated as ± (the line 11. ♖d4! in Paoli-Wagman, Reggio Emilia 1965/66), Black has made the inactive move 9... h6, and after 10. h3± he would not be able to maintain the pressure.

**9... ♖e8?±**

9... ♘e4! (this line is impossible after 6. ♖d5: ♖d5 protects pawn e4)



analysis diagram

10.d3 (10.♖e2? ♘g3—+; 10.c3 ♘f2 11.♖f2 ♙f2 12.♙f2 and now the blow 12...♙h3!⚡ (Harding-Gardner, cr 1975) was overlooked by Pálkövi, who has a strong tendency to overlook bishop sacrifices on h3) 10...♘d4! (10...♘g3 11.♖e1±) 11.de4 (11.♘d4 ♘f2 12.♖e2 ♙d4 13.c3 ♘h3 14.♙h2 ♙g1 15.♖g1=) 11...♘f3 12.gf3 ♖e8 (12...♙h3 13.f4 ♖e8 transposes) 13.f4 (preparing ♖f3) 13...♙h3 14.f5 ♙f1, with equality.

**10.♘c3? =**

10.d3! (offering more solid protection of e4 than 10.♘c3 does) 10...♖g6

A) 11.♙h2? loses to 11...♘g4! (analogous to the game) 12.hg4 (12.♙g1 ♘f2 13.♖f2 ♖g3) 12...♙g4 13.♘bd2 ♘d4;

B) 11.♙h1?! is equal, viz.

B1) 11...♘g4?! 12.♖e2□ ♖h5 (with the option of giving two pieces for rook and pawn on f2, followed by ...♙h3) 13.♙e3± ♘e3 14.fe3 ♙h3? 15.gh3 ♖h3 16.♘h2+—;

B2) 11...♙g4 =

B21) 12.hg4? ♘g4—+ 13.♙g1 (13.♘h2 ♘f2 14.♖f2 ♖f2) 13...♖h5 14.♘bd2 ♘d4;

B22) 12.♘bd2

B221) 12...♘d4 =

B2211) 13.hg4? ♘g4 14.♘h2 ♘f2 15.♖f2 ♖f2 16.♖g4 ♖g4 17.♘g4 ♖e2⚡;

B2212) 13.c3 ♘f3 14.♘f3 ♙f3 15.gf3 (15.♖f3? ♘h5!—+) 15...♖h5 16.♙g2 (16.♙h2? ♘e4! 17.f4□ ♖d1 18.♙d1□ ♘f2 19.d4=) 16...g5= with the idea ...♖h4, ...♘h5;

B222) 12...♖h5 13.c3 ♙h3? 14.gh3 ♖h3 15.♘h2±;

B3) 11...♖h5 (with the options 12...g5, 12...♙h3 and 12...♘g4 13.♖e2 ♘f2 14.♖f2 ♙f2 15.♖f2 ♙h3) 12.c3? ♙h3! 13.gh3 ♘e4!⚡;

C) 11.♘h4!± ♖g3 12.♘f5 ♙f5 13.ef5 ♖h4 (intending 14...♘d4 or 14...♘h5 and 15...♘g3) 14.♙e3 ♘d4 15.♘d2±.

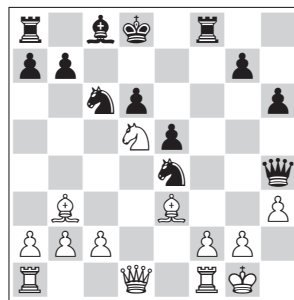
**10...♙d8?±**

Dodging the knight check on d5.

A) 10...♖h5?! 11.d3!

(11.♘h2?! (Estrin) 11...♖g6! =; Black regains the pawn; 11.♘d5?? (Pálkövi) 11...♘d5—+ 12.ed5 ♙h3; as mentioned, Pálkövi is not above overlooking bishop sacrifices on h3) 11...g5 (11...♙h3? 12.gh3 ♖h3 13.♘h2!+—) 12.♘h2 g4 13.♘d5 ♘d5 14.♙d5 ♖f2 15.♖f2 ♙f2 16.♙f2 g3 17.♙g3 ♖d1 18.♙g5 hg5 19.♖d1± White kept his extra pawn;

B) 10...♖g6! = (reconquering the pawn) 11.♘h4 ♖g5 (11...♖g3 12.♘f5 ♙f5 13.ef5±) 12.d4 ♖h4 13.dc5 ♘e4 14.cd6 cd6 15.♘d5 ♙d8 16.♙e3 (White is better according to Pálkövi. He overlooked the following bishop sacrifice)



analysis diagram

16...♙h3! 17.gh3 ♖h3 18.♘c3 ♖f3 (18...♘c3?? 19.♖d6; 18...♘d4 19.♙d4 ♖f6=) 19.♘e4 ♖g4 20.♘g3 ♘g3 21.fg3 ♖g3 22.♙h1 ♖h3 23.♙g1 ♖g3, with a repetition of moves.

**11.d3! ♖g6 12.♙h2?—+**

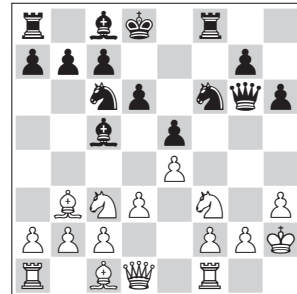
Overprotecting the h3 pawn, but there is no need to do so, and the king is exposed to a surprising check.

A) 12.♘a4?! = ♙h3 13.♘h4□ ♖g3 (not 13...♖g4?? 14.♖g4 ♙g4 15.♘g6 and Black's rook is trapped) 14.♘c5 (14.♖f3 ♖h4 15.♖h3 ♖h3 16.gh3=) 14...♖h4 15.♘b7 ♙c8 16.♘d6 cd6 17.gh3 ♖h3 18.c3 (18.♖e1 ♘d4 19.♖e3□ ♖g4 20.♖g4 ♘g4 21.c3 ♘b3 22.ab3 ♘e3 23.♙e3 a6⚡) 18...♘h7 19.f4= controlling g5;

B) 12.♘h4 ♖g3 13.♘f5 ♙f5 14.ef5±;

C) 12.♙h1! (preparing

13.♘h4) 12...♘g4 (12...♖h5 13.♘h2±) 13.♖e2!±.



**12...♘g4! 13.♙g1**

13.hg4 ♙g4—+.

**13...♘f2**

13...♘d4 is winning, e.g.

A) 14.♘h4 ♖f6 15.♙e3 (15.♘f3 ♘f2—+ 16.♖f2 ♘f3) 15...♖h4 16.hg4 ♙g4 17.♖d2 ♘f3 forcing mate;

B) 14.hg4 ♙g4—+ 15.♙g5 (15.♘h4 ♖h5) 15...hg5 16.♘e5 (16.♘d4 ♙d1 17.♘e6 ♙d7) 16...de5 17.♖g4 ♖h8;

C) 14.♘d4

C1) 14...♘f2? 15.♙h2□ ♙d4 (15...ed4 16.♘d5 ♘d1 17.♖f8 ♙d7 18.♘f4 ♖g5 19.♖f7 ♙c6 20.♘d5 ♖d8 21.♘e7=) 16.♖e2;

C2) 14...♙d4! 15.♙e3 ♘f2 16.♙d4 ♙h3 17.♖f2 ♖f2 18.♙f2 ♖g2 19.♙e1 ed4 20.♘e2 ♙e7, and the threat 21...♖f8 is decisive.

**14.♖f2 ♖g3?⚡**

14...♙h3!—+ 15.d4 (15.♙h1 ♙f2 16.gh3 ♖g3) 15...♘d4.

**15.♖e2□ ♙h3??—+**

15...♘d4⚡ 16.♙e3 ♘e2 17.♘e2 ♖g6 18.♙c5

A) 18...dc5? 19.♘e5 ♖e8 (19...♖f2? 20.♘g6 ♖e2 21.♙f1 and Black's rook is trapped) 20.♘f7 (White will regain the exchange) 20...♙d7 (20...♙e7 21.♘f4!+—) 21.♖af1 ♖e7 22.♘e5 ♖e5 23.♖f8 ♖b2 24.♖g8±;

B) 18...♖f6! 19.♙e3 ♙h3 20.♙h2 ♙g4 (20...♙g2? 21.♖g1 ♖g4 22.♖g2+— ♖h5 23.♙g1 ♖f3 24.♘g3! ♖g4 25.♘f5 ♖h3 26.♖f3 ♖f3 27.♖g7) 21.♖af1⚡.

**16.♙f1??**

Why not 16.♙e3□ ♙e3 17.♖e3

♖d4 18.♗e2!, winning?  
**16...♗g2**  
 16...♗f2 is equally crushing.  
**17.♖g2 ♖f3** **0-1**

**Braunsdorf,G**  
**Augustat,Siegfried**  
 cr 1993

**1.e4 e5 2.♗f3 ♗c6 3.♗c4 ♗f6**  
**4.♗g5 ♗c5 5.♗f7 ♗e7 6.♗b3**  
**♖f8 7.0-0 d6 8.d3 ♗g4 9.♗f3**  
**♖e8±**  
 9...♗d4 10.♗e3 ♖e8 (as in Paoli-Wagman, Reggio Emilia 1965/66, see below) 11.♗d4! ♗d4 12.c3 ♗b6 13.♗bd2!±.



**10.c3?!=**

This does not yield any advantage, so we must look for other options. After **10.h3?!** Black has only one correct answer to the ‘interrogation’:

A) 10...♗h5? obstructs his own queen and knight:

A1) 11.♗bd2? (it is unnecessary to obstruct ♗c1) 11...g5! 12.g4? ♗g4 13.hg4 ♗g4+- 14.♖e1 ♖h5 15.♗h2 ♖f6 Leisebein;

A2) 11.c3± (preventing the impending ...♗d4) 11...♗d7 (a slow move in response to a slow move, but in order to prepare ...♖g6 Black must dodge a possible knight check on f5; 11...♖g6? 12.♗h4!+- ♖g3 13.♗f5)

A21) 12.♗g5? (Leisebein) 12...♗e4! (12...h6? 13.♗f6 ♖f6 Leisebein 14.♗bd2 ♖g6 15.♗h2 ♖af8± (with the option 16...♗f3 17.♗f3 ♖h5 if possible followed by 18...♖f3; so on the 18th move

White should move his queen to enable 19.♗d1) 16.g4?! ♗g4 17.hg4 ♖g4 18.♖g1 ♖h5=) 13.g4 (13.de4? ♗f3+- 14.gf3 ♖g6) 13...♗f2 14.♖f2 ♗f2 15.♗f2 ♗g6 (with the options 16...♗d3 17.♖d3 e4 and 16...e4) 16.♗d5 e4 17.♗e4 ♗e4 18.de4 ♖e5 19.♗g2 ♖f3 20.♖f3 ♖g5±;

A22) 12.♗e3 ♖g6 13.♗c5 (13.♗h4± ♖g3 14.♗e6! ♗d8 15.♖b3 ♖h4?! 16.g3+- trapping ♖h4) 13...♗e4 14.♗h4 ♖g5 15.♗e3 ♖h4 16.♖c1 ♗e2 (16...♗f6? 17.♗g5+- trapping ♖h4) 17.de4 ♗f1 18.♖f1 ♖e4 19.♗d2±;

A3) 11.♗e3±, keeping control over g5;

B) 10...♖h5?± (the passive bishop sacrifice on g4, similar to the one under Smirnov-Shkurovich – there with 6.♗d5 and the exchange on c6. Black threatens 12...♗h3! 13.gh3 ♗e4) 11.hg4 ♗g4 12.♗g5

B1) 12...♗e8 13.♗bd2 ♗f2 (13...♗d4 14.♗h4 ♗f3 15.♗f3 ♖f3 16.♖f3 ♖h4 17.♖h3 ♗f2 18.♗h1±) 14.♖f2 ♗f2 15.♗f2 ♖g5 16.c3±;

B2) 12...♗d7 13.♗bd2 ♗d4 (13...♗f2?? 14.♗e5) 14.♗h4 ♗f3 15.♗f3 ♖f3 16.♖f3 ♖h4 17.♖h3 ♗f2 18.♗h1±;

C) 10...♗f3!= 11.♖f3 ♖g6 (threatening 12...♗h5)

C1) 12.♗h2= ♗h5 13.♖e2 (13.♖g4 ♗f2 14.♖g6 hg6 (threatening 15...♗g3 16.♗g1 ♗h2+-, compare the note to 11.♗d4! and 13.h3?! in Paoli-Wagman) 15.♗g5 ♗d7 16.♗c3=) 13...♗d4 (13...♖f2?! 14.♖f2 ♖g3 15.♗h1 ♖f2 16.♗g5 ♗f8 17.♖f2 ♗f2 18.♗c3±) 14.♖g4 (14.♖e1? ♗b3 15.ab3 ♖f2 16.♖f2 ♖g3 17.♗h1 ♗f2±) 14...♗b3 15.♖h4 (15.ab3 ♗f2=) 15...♗d7 16.ab3 ♗f4 17.♗f4 ♖f4 18.♖g3 ♖g3 19.♗g3 ♖af8 20.f3 h5 White’s extra f-pawn has become useless;

C2) 12.♖f5 ♖f5 13.ef5 ♗d4 14.♗e3 (14.g4 h5±) 14...♗d7= (14...♗f5 15.♗c5 dc5 16.♖e1±) 15.g4 h5.

**10.♗bd2?!** (unnecessary obstruction of ♗c1) 10...♗d4 (11.h3 ♖h5=) transposes to a line analysed under Paoli-Wagman.

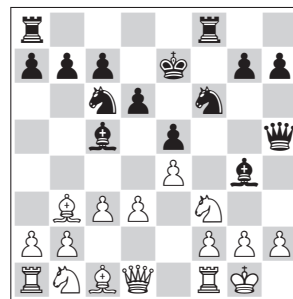
**10.♗e3!** is White’s best option.

A) 10...♖h5 11.♗bd2 ♗d4 12.♗d4 ♗d4 13.c3 ♗b6± Baer-Leisebein, cr 1997;

B) 10...♖g6 (threatening 11...♗e4) 11.♗h4 (11.♗c5?! ♗e4! 12.♗h4 ♖h5 13.♗d6 ♗d6 14.f3±; 11.♗bd2 ♗d4± transposing to 9...♗d4 10.♗e3 ♖e8 11.♗bd2 ♖g6 is discussed under Paoli-Wagman. Here 12...♗e4 13.♗d4 ♗d2 14.♗e5 ♗d1 15.♗g6 hg6 16.♖e1 ♗d8 17.♗c5 ♗b3 18.cb3 ♗c2 with opposite-coloured bishops and a draw in spite of the pawn deficit, is a threat but 12.♗h1± unpins the g2 pawn) 11...♖h5 12.♗f5 ♗d7 13.♗e6 ♗d8 14.♖d2± Leisebein;

C) 10...♗d4± transposes to Paoli-Wagman, Reggio Emilia 1965/66, examined below.

**10...♖h5**



**11.♗e3=**

11.♗bd2= (almost a dynamic equilibrium. Neither side can undertake anything to improve their position. For instance White can try 12.h3, not fearing 12...♗h3? 13.gh3 ♖h3 14.♗h2, but Black can offer the passive bishop sacrifice on g4) 11...g5 12.h3 ♗h3 13.gh3 ♖h3 14.d4 (14.♗g5?? ♖g3) 14...ed4 15.♗g5 ♖g8 16.♗g8 ♖g8 17.♗f3 dc3 18.♖b3 ♗e5 19.♗e5 (19.♗h2? ♖g5 20.♗g5 ♗f3 21.♗f3 ♖g3 22.♗h1 ♖f3 23.♗h2 ♖h5 24.♗g2 ♖g5 25.♗h1 ♖h4 26.♗g2 ♖g4

27.♖h2 ♖f3 28.♗g1 ♖f2 29.♖h3 ♖e3 30.♗g3 ♖h6 31.♖g2 ♖e4--+) 19...♗g3 20.♖h1 ♖h4 21.♖g2 ♗g5 22.♗g5 ♖g5, with a repetition of moves.

**11...♖d7?±**

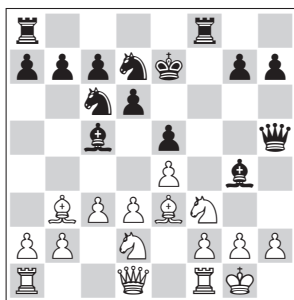
From this square the knight cannot participate in the actions against White's king until much later.

11...♗f3!= 12.♖f3 (12.gf3 ♗e3 13.fe3 ♖g5 14.♖h1 ♖e3±, the d3 and f3 pawns and the f4 square are critically weak) 12...♖g4! 13.♖g3□ and now:

A) 13...♖e3?! 14.fe3 ♗f1 15.♖f1 ♗f8 16.♖e1 (16.♖g1? ♖e2--+) 16...♗e3 (16...♖h6 17.♖e2±) 17.♖e3 ♖h2 18.♗d1! (18.♖g5?= ♖e8 19.♗d1 ♖g1 20.♖d2 ♗f2 21.♖c1 ♖e1=) 18...♖h1 (18...♖g2 19.♗e2 ♖h1 20.♖d2±) 19.♖d2 ♖g2 20.♖c1 g5 21.♖d2 (21.♖e2?! ♗f2 22.♖h5 ♖g3=) 21...♗f2 22.♖c2 h6 23.♗h5 ♖h2 24.♗f3 ♖d4 25.cd4 ed4 26.♖d4 ♗d2 27.♖b3±;

B) 13...♗e3! 14.fe3 ♖h2 (14...♗f1 15.♖f1 ♗f8 16.♖g1 ♖h2! 17.♖d2 ♖g4 18.♗d1 ♖g5 19.♗g4 h5=) 15.♖h2 ♗f1 16.♖f1 ♖h2 17.♖e2 ♗f8 18.♖d2=.

**12.♖bd2**



**12...♗f3**

Consistent but insufficient.

**13.♖f3 ♗f8 14.d4**

Clearing the c4-e2 diagonal to transfer the king's bishop. 14.♖d2? ♗f3 15.♗g5 ♖e8 16.gf3 ♗f3! 17.♗e6 (this bishop cannot maintain control over the h3 square, the c8-h3 diagonal is too short) 17...♖f8! 18.♗f5 g6 19.♗h6 gf5 20.♖g5 ♖g5 21.♗g5

fe4 22.de4 ♖e6±.

**14...ed4**

Clearing the 5th rank first. 14...♗f3? 15.cd5 ♗e3 16.cd6 cd6 17.f3 loses, since the rook on e3 is boxed in and will be lost.

**15.cd4 ♗b6**

15...♗f3 16.cd5! ♗e3 17.cd6 (17.f3? ♖c5±; 17.♖d5 will transpose to 17.cd6 cd6 18.♖d5) 17...cd6 18.♖d5 (now Black has to return the exchange) 18...♗b3 (18...♗e2 19.♖h5 ♗h5 20.♗d1 ♖d4 21.♗e2±) 19.♖b3±.

**16.♖h1?--+**

Probably to clear g1, but only inviting another exchange sacrifice. 16.♖d3? ♗f3 (--+ Leisebein) 17.♗d1!±; 16.♗c4! ♗f3 17.♗e2! ♗f4 18.f3! ♗e4 19.fg4 ♖a5 20.♗f2±; 16.♖d2?! ♗f3± (16...♗f3?! 17.gf3 ♖f3 18.♗d1 ♖e4 19.f3±) 17.gf3 ♗h3 18.♗f4 (18.♗d1 ♖d4--+) 18...♖d4 (18...♖f3 19.♗d6 ♖e8 20.♖g5 ♗f1 21.♗f1 cd6 22.♖g7±) 19.♖d1 ♖f3 20.♖h1 ♖de5! 21.♗g1 ♖g4 22.♖f3 ♖f2 23.♖f2 ♗f2 24.♗g7 ♖f6 25.♗f7 ♖g6 26.♗g3±.

**16...♗f3!**

The second exchange sacrifice on f3.

**17.gf3?!**

17.♖d2 (the toughest move, moving away from Black's battery, protecting the d4 pawn, and avoiding the self-pin of ♗e3)

A) 17...♗h3?! 18.♗f4! (18.♗g5 ♖e8 19.♖f4 ♖d4--+ Leisebein) 18...♖d4 19.♗d1 ♗d1 20.♗ad1 ♖f3 (20...♖e5 21.f3± ♖ef3 22.gf3) 21.gf3 ♖f3 22.♖g1 ♖g4 23.♖h1± ♖f6 24.e5 ♖f3 25.♖g1= ♖e4 26.ed6;

B) 17...♖d4! 18.♗d4 ♗h3 19.♖f4 g5 20.♖f7 ♖f7 21.♗f7 ♗d4 22.gh3 ♗f3 23.♖g1 ♖f7--+. Compare this endgame to Capablanca-Alekhine, Nottingham 1936. White has several weaknesses, but probably the best plan is ...♖e5, ...h5-h4, ...g4 hg4 h3, ...♖g4, ...♗e5 and mate on h2.

**17...♗f3 18.♖f3 ♖f3 19.♖g1**

It is totally over.

**0-1**

**Paoli, Enrico**

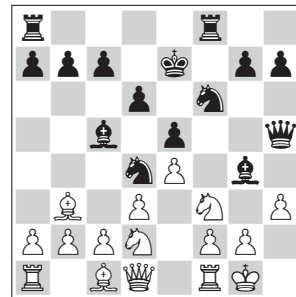
**Wagman, Stuart**

Reggio Emilia 1965/66 (1)

**1.e4 e5 2.♖f3 ♖c6 3.♗c4 ♖f6 4.♖g5 ♗c5 5.♗f7 ♖e7 6.♗b3 ♗f8 7.d3 d6 8.0-0 ♗g4 9.♖f3 ♖d4 10.♗e3!±**

10.♖bd2?!=

A) 10...♖e8 11.h3 ♖h5 (the passive sacrifice of ♗g4)



12.c3 (12.hg4?? ♖g4--+) 12...♖f3 13.♖f3 ♗f3 (13...♗h3? 14.gh3 ♖h3 15.♖h2□--+) 14.♖f3 ♖f3 15.gf3 ♖h5= White's extra pawn is fully useless;

B) 10...♗h5 (threatening 11...♖f4 and 12...♖g2) 11.c3±

B1) 11...♗f3 12.♖f3 (12.gf3 ♖b3 13.♖b3 ♖f4=) 12...♖f3 13.gf3 ♖f4 14.d4 ♗b6 15.♖h1±;

B2) 11...♖b3 12.ab3 ♖f4 13.♖c4± ♖g2?? 14.♗g5+--;

B3) 11...♖f3 12.♖f3 ♗f3 13.gf3 transposes to 11...♗f3 12.♖f3 above. 13.♗g5 ♖e8 14.♗d8 ♗d1 15.♗d1 ♖f4 16.♗h4=.

**10...♖e8**

Threatening not only 11...♖f3 12.gf3 ♗h3, but also 11...♖e4! 12.de4 ♗f3 13.gf3 ♖f3.

In Cheymol-Carnic, Eger 1990, White's bishop was on d5 allowing Black the very strong 10...♖d5!. 10...♖e4? is premature, but only because of the position of ♖e7 and ♖d8 on the same diagonal: 11.de4 ♖f3 12.gf3 ♗f3 13.♗g5+--; 10...♖f3 11.gf3 ♗h3 12.♗e1 ♖e8 13.♖h1 (intending ♗g1; Szeicht-Beth, cr 1991) 13...♖h5 (threatens 14...♖g4--+) 14.♗g1± **11.♖h1?±**

The text move probably anticipates Black's threat 11...♟f3 12.gf3 ♘h3, to prepare 13.♞g1, but it makes a future double attack by Black's bishop on f3 (forking ♟d1 and ♟h1) possible.

11.♟bd2?! =

A) 11...♟g6?! 12.♟h1± (unpinning pawn g2; 12.♟d4 ♟d4 13.c3 ♟b6 14.♟h1±);

B) 11...♟h5?! 12.♟d4! ♟d4 13.c3 ♟b6 transposing to 11.♟d4 ♟d4 12.c3 ♟b6 13.♟d2 ♟h5;

C) 11...♟f3! (in these lines Black is lucky if he can exchange his queen knight on f3, retaining his other pieces to put pressure on the knight that will recapture. White in turn should exchange ♟d4 by other means, which explains why 11.♟d4! is best) 12.♟f3 ♟h5 13.♟c5 dc5 (threatens 14...♟d7 and Black is better; if possible Black would play 15...♞f3) 14.♞e1 (14.h3 ♟f3 15.♟f3 ♟f3 16.gf3 ♟h5=) 14...♟d7 (14...♞f3=) 15.♞e3 ♞f6 (threatening 16...♞af8±) 16.h3 ♟f3 (16...♟h3? 17.gh3 ♞g6 18.♟f1 ♟h3 19.♟e2+- White continues 20.♟h1) 17.♞f3 ♞f3 18.♟f3 ♟f3 19.gf3 ♞f8 20.♟g2 ♟f6±.

11.♟d4!± (no squeamishness about the pair of bishops) 11...♟d4 12.c3 ♟b6

A) 13.h3?! ♟f3 14.♟f3 ♟h5 15.♟g4 ♟g6! 16.♟g6 hg6 17.♟h2 (otherwise 17...♟g3) 17...♟f2 18.♟a3= (protecting ♞f1, otherwise 18...♟g3 19.♟g1 ♟h2);

B) 13.♟bd2!

B1) 13...♟h5 14.♟e2 (overprotecting pawn d3, thereby preparing 15.h3 ♟h3 16.gh3 ♟h3 17.♟h2, and clearing d1 for ♟b3; ...♟f4 would be a risk, but h5 is obstructed by Black's queen; 14.h3?! ♟h3 15.gh3 ♟h3 16.♟h2□♟d3= Baer-Leisebein, cr 1997) 14...♟g6 15.♟d1 (planning 16.♟c4) 15...♟h5? 16.♟e5!±;

B2) 13...♟g6 14.♟h1 (intending 15.h3; 14.♟e2?? ♟h5!+- 15.♟d1 ♟f4 16.♟h4 ♟h5 and

17...♟g2) 14...♟h5 15.♟e2! ♟d7 16.♟d1! with the plan 17.♟c4 and 18.♟d2 or 18.♟e3, or eventually 17.♟e1 and 18.♟g1 (in Steinitz style, but consolidating the extra pawn).

11...♟h5±

11...♟e4± (with White's bishop on d5 instead of b3 Black would of course capture on d5, not e4) 12.♟d4 (12.de4? ♟f3+-)

A) 12...♟f3= 13.gf3 ♟d4 14.fe4 (14.de4?! transposes) 14...♟b2 15.♟d2 ♟a1 16.♟a1=;

B) 12...♟d4= 13.de4

B1) 13...♟h5? 14.♟bd2 ♟b2 15.♞b1 ♟c3 16.♟c1 (unpinning ♟f3) 16...♟d2 (16...♞f3 17.♟f3 ♞f3 18.♟d1+-; 16...♞f6 17.♟g1!+-; 16...♞f3 17.♟f3 ♟f3 18.♟e3+-) 17.♟d2 ♞f6 (threatens 18...♞h6+-) 18.♞e1 (clearing f1 for ♟d2) 18...♞f2±, not 18...♞h6 which loses to 19.♟f1 ♟e2 20.♞e2! ♟e2 21.♟g5 ♟f8 22.♟g3;

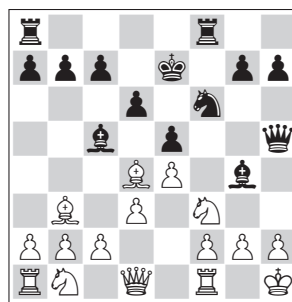
B2) 13...♟b2?! 14.♟bd2 ♟a1 15.♟a1 ♟h5 16.♟c3±;

B3) 13...♟f3= 14.gf3 ♟b2 15.♟d2 ♟a1 16.♟a1 ♟h5 17.♟c3=;

C) 12...♟h5!± transposing to 11...♟h5 12.♟d4 ♟e4.

12.♟bd2?+-

12.♟d4



analysis diagram

A) 12...♟d4± 13.c3 ♟e4! 14.de4 (14.cd4 ♞f3 15.de4 transposes) 14...♞f3 15.cd4 ♞h3 16.gh3 ♟f3 17.♟f3 ♟f3 18.♟g1 ed4 19.♟d2 ♟h3±;

B) 12...♟e4!±

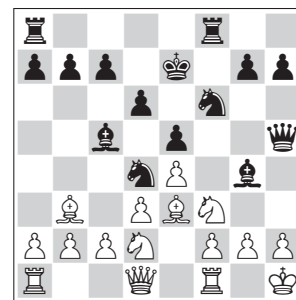
B1) 13.de4 ♞f3 14.♟e5?! (pro-

tecting h2, otherwise 14...♞h3 would be the reply) (14.♟f3 ♟f3 15.♟c5± transposes to 13.♟c5 ♞f3 14.♟f3 ♟f3 15.de4) 14...de5 (14...♞f2 15.♞f2 ♟d1 16.♞f7 ♟f7 17.♟f7 ♟c2±) 15.♟d5 ♟b6 threatening 16...♞af8 and then possibly 17...♞h3 (because f7 is then covered) or capturing on f2 16.♟d2 ♞d8 17.gf3 ♟f3 18.♟f3 ♟f3 19.♟g1 and with two rooks for a queen and opposite-coloured 19...♞d5 should win, e.g. 20.ed5 (20.♟d5 c6) 20...e4 21.♞ae1 e3;

B2) 13.♟c5± ♞f3 14.♟f3□ ♟f3

B21) 15.de4 dc5 16.♟c3 (16.♟d2? ♟g2; 16.gf3? ♟f3 17.♟g1 ♞d8+- intending 18...♞d6) 16...♟e2±;

B22) 15.♟e3 ♟e2! (15...♟g2?±= 16.♟g2 ♟g4 17.♟h1 ♟f3 18.♟g1 ♞f8 19.de4 ♞f6 20.♟g5 ♟g4 21.♟h1 ♟g5 22.♟c3) 16.♞e1 ♟f6 17.f3 ♟f3 18.gf3 ♟f3 19.♟g1 ♟g4 20.♟d2 ♟h3 21.♟f1 ♞f8 22.♟g5 ♟e8 23.♞e2 ♞f5 (23...♟f2 24.♟g3 ♟g4 25.♞f2 ♞f2 26.♟f2 ♟g5=) 24.♟d2 ♟f3 (preventing 25.♟d5) 25.♞g2 (with the idea 26.♟e6! or 26.♟g3) (25.♞ae1?? ♟f2!+-) 25...♟f2 26.♟g3 ♟h3 27.♟h1 ♞f6±



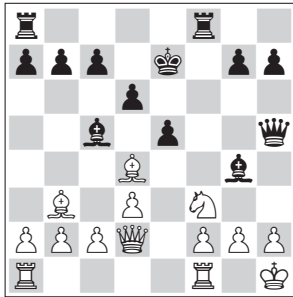
12...♟e4!! 13.♟d4

13.de4

A) 13...♟f3+- 14.gf3 (14.♟f3 ♞f3 15.♟d5 c6) 14...♞f3 15.♟c5 ♞h3 16.♟g4 ♞h2 17.♟g1 ♟g4 18.♟h2 dc5; ♟d2 is unprotected and White's king position is very bad, he must drop a piece;

B) 13...♞f3 14.♟g5 ♟g5

(14...♖e8--+) 15.♗f3 ♖h5  
16.♗d4 ♗d1 17.♗f5 ♗f8  
18.♞ad1--+.  
**13...♗d2 14.♖d2**  
Introducing the option of 15.♖g5,  
so ♗f3 must be removed.



**14...♗f3??**  
Wrongly shunning the exchange  
sacrifice 14...♞f3!--+

- A) 15.♗c5 ♞h3;
- B) 15.♗e3 ♞h3 16.♗f4  
(16.♗g5 ♗d7) 16...ef4 17.♖f4  
♞f8 18.♞ae1 ♗d7 19.♖g4 ♖g4  
20.♗e6 ♖e6 21.♞e6;
- C) 15.♗d5 (controlling f3)  
15...♗d4!--+ (15...♞f6 16.♗e3  
controlling h6) 16...c6 17.♗b3  
♞f3=) 16.♗f3 ♗f3 17.c3 ♗b6  
18.gf3 ♖f3 19.♗g1 ♞f8 20.♖g5  
♞f6 21.♖g7 ♗e6.

**15.♞g1?--+**  
15.♗c5! ♞f6 (15...♗g2 16.♗g2  
♖f3 17.♗g1=) 16.♞fe1 ♞g6!  
17.♞e5 ♖e5 18.gf3 ♖c5 19.♖f4  
(threatening both 20.♖f7 and  
20.♞e1) 19...♞h8±.

**15...♗d4 16.c3**  
16.gf3 (opposite coloured bish-  
ops) 16...♖f3 17.♞g2 (threatening  
18.♖g5) 17...♞f4 18.c3 ♗b6  
19.♗d1 ♖c6 (19...♖h3 20.♞g7  
♗f6 21.♞g2 ♖h4±) 20.d4 g6--+.  
**16...♗c6!**  
16...♗b6 17.gf3 ♖f3 18.♞g2±,  
despite the opposite coloured bish-  
ops.

**17.cd4 ♞f4!**  
This holds the threat of 18...♞h4.  
17...ed4 18.♞ae1 ♗d8±.  
**18.♗d1 ♖f5?±**

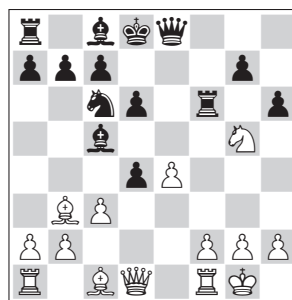
18...♖h4!--+ 19.de5 ♖f2 20.ed6  
♗d6 21.♖f2 ♞f2 22.♗f3 ♞f3  
23.gf3 ♗f3 24.♞g2 ♞e8 25.♞f1  
♗g2 26.♗g2 ♞e2.  
**19.de5 ♞f2 20.ed6 cd6 21.♖e3**  
**♗f8 22.♗g4 ♖f4**

Now the ending after 23.♖f4 ♞f4  
24.♞gf1 is just as equal as the line  
22...♖f6 23.♗h3 ♖b2 24.♞af1.

1/2-1/2

**Howell,James**  
**David,Alberto**  
Groningen 1995

**1.e4 ♗c6 2.♗f3 e5 3.♗c4 ♗f6**  
**4.♗g5 ♗c5 5.♗f7 ♗e7 6.♗b3 ♖e8**  
[6...♞f8 7.d3 d6 8.♗e3 ♗e3 9.fe3 ♗g4  
10.♗f3 ♗e3 11.♖e2?! (11.♖d2! ♗g4  
12.♖g5 ♗e8 13.♖g7 ♞f3 14.gf3 ♖h4  
15.♗d2 ♖f2 16.♗c1) 11...♗g4 12.♗c3  
♗d4 13.♗d4 ♞f2! 14.♗f5 ♗f5 15.♖d1  
♗f8 16.ef5 ♞g2 17.h4 ♞g1! 18.♞g1 ♖h4  
19.♗d2 ♖h6 20.♗e1 ♖h4 1/2-1/2  
Zinnmann-Egorovsky, or 1971] **7.0-0 ♞f8**  
[7...d6 8.d3 ♗g4 9.♗f3 (9.♖e1 h6)  
9...♗d4 10.♗bd2 ♖h5 11.c3 ♗f3 12.♗f3  
♞af8 13.h3 ♗h3!±] **8.♗c3 d6 9.♗d5**  
**♗d8 10.c3 h6 11.d4** [11.♗f6 ♞f6  
12.d4 ♗b6; 11.♗f3 ♗g4 12.♗e3 ♗e3  
13.fe3 ♗e4 14.d3 ♗c5] **11...ed4**  
**12.♗f6** [12.e5 ♗d5 13.♗d5 de5 14.♗e4  
♗b6 15.cd4 ♗d4 16.♗e3 c6 17.♗c4  
♖g6∞ Howell] **12...♞f6**



**13.e5!? ♞f5** [13...♖e5 14.♗f7 ♞f7  
15.♗f7 dc3 16.bc3 ♖c3 17.♞b1±;  
13...♞f8 14.ed6!? hg5 15.♗g5 ♞f6  
(15...♗d7? 16.♞e1 ♖g6 17.♖g4+--)  
16.♗f6 gf6 17.dc7 ♗c7 18.♞c1∞ ±

Howell] **14.♗f3 ♗e5** [14...de5 15.♗c2  
♞f6 16.b4 ♗b6 17.b5± Howell] **15.♗d4**  
**♞f6 16.♗e3 ♗g4?! [16...♖f8!? (Howell)**  
17.♗h1 (17.♗c2) 17...g5 18.♗e6 ♗e6  
19.♗c5 ♗b3 20.ab3 ♗c6] **17.♞e1 ♗e3**  
**18.♞e3 ♖f8 19.♖e2 c6 20.♞e1±**  
**♗d7 21.♗e6 ♗d4 22.cd4 ♗e6**  
**23.♞e6 ♞e6 24.♖e6 ♞c8 25.♞e3**  
**♗c7? [25...d5] 26.♞f3 [26...♖e8 27.♞f7**  
♗b8 (27...♗b6 28.♖b3 ♗a5 29.♖a3)  
28.♖d6 ♗a8 29.♞e7+--; 26...♞e8 27.♞f7  
♗b6 28.♖b3 ♗a5 29.♖c3+--] 1-0  
Van der Tak

**Endgame comparison**  
**2 rooks vs 3 minor pieces**

**Capablanca,Jose**  
**Alekhine,Alexander**  
Nottingham 1936 (2)

**1.d4 e6 2.♗f3 f5 3.g3 ♗f6 4.♗g2**  
**♗e7 5.0-0 0-0 6.c4 ♗e4 7.♖b3 ♗f6**  
**8.♞d1 ♖e8 9.♗c3 ♗c6 10.♗b5**  
**♗d8 11.♖c2 d6 12.d5 ♗b4**  
**13.♖b3 ♗a6 14.de6 ♗ac5 15.♖c2**  
**♗e6 16.♗fd4 ♗d4 17.♗d4 ♗f6**  
**18.♗b5 ♖e7 19.♗e3 a6 20.♗d4**  
**♗d7 21.♞ac1 ♞ae8 22.b4 b6**  
**23.♗f3 [≥ 23.♖b3] 23...♗c3 24.♞d3**  
**f4? [24...♗a4 25.♖d2 ♗e4 26.♖e1 g5!±**  
Alekhine] **25.gf4 ♗f5 26.♖d2 ♗d3**  
**27.ed3 c5? [27...♗a4] 28.♞c3 ♗c3**  
**29.♖c3+--**



**29...♖f6 30.♖f6 gf6 31.♗d2 f5**  
**32.b5 a5 33.♗f1 ♗f7 34.♗g3 ♗g6**  
**35.♗f3 ♞e7 36.♗f1 ♗f6 37.♗d2**  
**♗g6 38.a4 1-0**